

77

independent free

15+ brands. one ecosystem.

(1)00:00 (2)Ahundred (3)Aroud (4)Bart (5)By Nrutseab

(6)Convconv (7)Cooked (8)Eleve (9)Habo (10)Hilde (11)Node

(12)Nuff (13)Nut (14)Remarsh (15)Screner (16)The Batch

Universal Disclaimer

This document is provided for informational and preview purposes only. Certain statements, projections, and specifications are based on internal validation, modelling, and development-stage assumptions unless otherwise stated.

References to carbon-free or sustainability-related performance are based on internal methodologies and current system design, and may be subject to third-party verification, regulatory standards, and operational conditions.

All metrics, performance indicators, and system capabilities are indicative and may evolve as development progresses.

Any references to lifetime warranty, service coverage, or ongoing support are subject to applicable terms, conditions, usage guidelines, and service frameworks.

Nothing in this document constitutes an offer, commitment, or contractual obligation. All services, structures, and participation frameworks are subject to formal agreement and case-by-case evaluation.

Nrutseab reserves the right to modify, update, or refine any aspect of the systems, services, or structures described.

Investors Relations**myla.zhang@nrutseab.com****Media****media@nrutseab.com****General****hello@nrutseab.com**

overview

solutions & products

main announcements July 7 2026



categorized as below

solutions

advertising

digital

logistics

property

services

products

auto & aero

consumer

entertainment

materials

tech

view on figma

<https://www.figma.com/design/9yAW4FTj81UfAeAnWhwTTA/77-announcements---teaser?node-id=0-1&t=IUrbGrBKr47u8G1J-1>

remarsh

status
deployment 01 2027

Responsive Advertising Platform

Platform Core

A responsive advertising system. One Smart MP4 + one API turns any screen (OOH LED, digital, CTV, mobile, broadcast) into a living experience that reacts to audience emotion and attention in real time.

Full-Service Adaptive Content Production

Full production support from conceptualization to deployment available. :15 / :30 / :60 / :90 emotion-adaptive commercials and trailers for brands. Endings, music intensity, voice-over tone, suspense levels, and final product shots all change live based on real-time audience reaction.

Privacy & Compliance Layer

100 % on-device processing. Raw video lives 3 seconds then auto-deletes. Merkle-proofed anonymized metadata only. Instant consent revocation. Built for GDPR, CCPA/CPRA, PIPL, and cross-border compliance.

Go-to-Market Risk-Free Trial Program

We ship, install, and insure the cameras at our cost. You keep 100 % of the data and insights. No long-term commitments.

dwelt time

+ 40-180%

emotional valence

2-3%

main features

**Automated dynamic endings,
reactive immersive environment,
jump-screen moments, adaptive
music & lighting**

accuracy

**F1 91.5 % demographics
87 % attention
77.5 % emotion latency**

watch it at scale
YEAR! 2026 events.nrutseab.com

learn more at
rmsh.nrutseab.com

remarsh camera

status
deployment **01 2027**

Responsive Advertising Platform

memory

32GB

butter ram
+1tb non-volatile storage

power

~180mW

peak per perception module

power

the block

10x10mm + solar

quality

4K 30fps

under sunlight

connectivity

**Wi-Fi 7, 5G,
Bluetooth 6.0**

processing

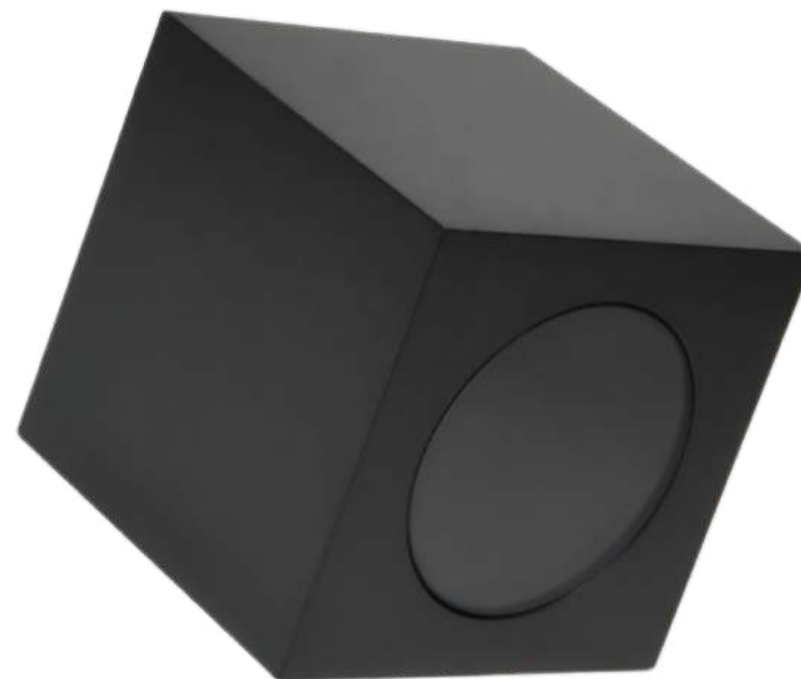
**crepe metalens +
edge npu**

size

1x1x1cm

latency

12ms



watch it at scale
YEAR! 2026 events.nrutseab.com

learn more at
rmsh.nrutseab.com



magnet-and-go installation and deployment. api links automatically with existing infrastructure.

screens

status
delivery 01 2027

Ultra-Thin Digital OOH Displays



resolutions

4-8K

sizes

25-85"

thickness

<1cm

Safety & Compliance

Brand-safe operation with retailer-controlled approval system. Store manager training services included. Tamper-resistant design. Full content moderation ensures zero risk of non-compliant advertising. Survives high-traffic retail environments with automatic brightness adjustment for optimal visibility.

Form Factor

Ultra-slim profile under 1 cm thickness for discreet integration. Three versatile sizes supporting portrait or landscape orientation. Plug-and-play installation with no capital expenditure for retailers.

Operating Range

24/7 commercial operation with built-in Wi-Fi/Ethernet connectivity. Energy-efficient LED backlighting. Optional weatherproof enclosure for window-facing use. High-brightness panels optimised for indoor and direct sunlight conditions.

Unified Control Panel

Real-time content approval, Custom black-out periods, Brand-specific restrictions, Impression tracking using Remarsh with Real Time Metrics, Royalty reporting

For Retailers

Zero-cost professional displays + passive royalty income + modern store enhancement with full brand control.

For Advertisers & Brands

Prime in-store and window inventory + superior 4K/8K visual impact + measurable performance + guaranteed brand safety at point of purchase.

register your interest at
rmsh.nrutseab.com

packs

status
delivery 3-6 months

Packaging That Pays For Itself



For brands

Free packaging upgrade

Advertisers sponsor the dot. Your packaging gets smarter and more sustainable, your data gets richer.

For advertisers

Intent at point of use

Reach verified consumers with both hands on the product – not a scroll, a deliberate tap.

ESG built in

Smart bin included

Recycling infrastructure is part of the service.

Measurable sustainability without extra spend. Up to \$1 returned per packaging recycled through the smart bin.

process

consumer taps

RFID on every pack
One tap unlocks branded content, an ad, and a reward. No app needed.

consumer returns

Into the smart bin
Packaging is sorted and recycled. Up to \$1 reward paid per returned unit.

metrics

First-party, consented
Tap rate, recycle rate, return rate, demographics.

learn more at
packs.nrutseab.com

sconv screens

status
delivery 3-6 months

Retail-to-Cinema Immersive Content Network

MODULE 01

Ambient Brand Worlds

GESTURE + VOICE COMMERCE

- Hidden drops via swipe or point
- Reward unlock triggers
- Layered product reveals
- Instant checkout pathways

ADAPTIVE CONTENT LOOPS

- 15-30s non-intrusive ambient loops
- 5s contextual spacing buffers
- Smart frequency balancing
- 1-hour daily ad-free integrity window

STARTUP + HOME INTERFACE

- Branded entry (skippable after 5s)
- Interactive home panels
- Live drops & campaign events
- Store-to-digital continuity

MODULE 02

Sconv Cinema

Story as an interactive medium - cinema evolves from passive viewing into branchable, participatory storytelling.

INTERACTIVE NARRATIVE EMBEDS

- Gesture on objects + story branches
- Voice commands for alternate scenes
- Interact with products in-narrative
- Shift: character / observer / 360°

360° IMMERSIVE LAYER

- Spatial audio + panoramic expansion
- Multi-angle storytelling windows
- Reactive environments from audience

CONTENT-NATIVE BRAND INTEGRATION

- Brands as narrative triggers
- Story characters or systems
- Decision points in plot architecture

MODULE 03

Experience Layers

UNIFIED SYSTEM

- 360° mass + premium formats
- Retail and cinema, one infrastructure

INTERACTION MODES

VOICE	GESTURE	REWARDS
BRANCHING	HAPTIC	SPATIAL AUDIO
360° VIEW		

CONTENT NATIVE ENGINE

Ads become story components, not interruptions. Every placement carries narrative purpose and audience-triggered depth.

REMARSH INTELLIGENCE

- Real-time audience segmentation
- Behavioral adaptation engine
- Creative rotation optimization
- Context-to-conversion tracking

360°

IMMERSION

3

INTERACTION MODES

24/7

AMBIENT LOOP

01

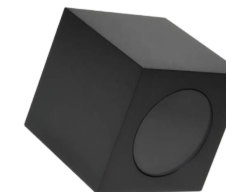
Retail + Cinema unified immersive network - single infrastructure, dual-format impact across footfall and seated audiences.

02

Real-time interactive storytelling infrastructure - audiences and shoppers shape content through behavior, gesture, and voice.

03

Ads that behave like content ecosystems, not interruptions. Brand presence embedded as story logic.



powered by
Remarsh

TIER A

Mass Market

- 01 High-frequency ambient exposure across retail networks
- 02 Contextual brand loops tailored by location and time
- 03 Reward-driven engagement mechanics at point of sale
- 04 Scalable campaign deployment via centralized dashboard

TIER B

Mid Market & HNW

- 01 Experience packs & occasion-based targeting
- 02 Premium cinema-only narrative immersion layers
- 03 Exclusive product and story integrations
- 04 Private brand screenings & curated launches

learn more about seab

see campaign concepts at 77.nrutseab.com/77

seab experience

status
delivery 3-6 months

The World's Most Immersive Ad Ecosystem

ambient brand worlds

Full-scene takeover – lighting, visuals, soundscapes themed around your brand. Your brand becomes the atmosphere in living spaces in one click.

360° immersive

Mass + Premium

gesture & voice interaction

Swipe, point, or speak brand phrases to unlock content layers, hidden drops, and rewards. Passive viewing becomes physical participation.

Voice

Gesture

Rewards

interactive content embeds

Brands woven into films and episodic drops. Gesture on a product to branch the storyline. Voice-trigger branded scenes. Not placement – story participation.

Content Native

Premium

pop up ad loops

Non-intrusive corner placements, 15–30s loops, 5s spacing, smart rotation. 1 hour ad-free allocation preserved per user daily.

Non-Intrusive

Mass

startup & home interface

Full-screen brand moment on device startup (skippable at 5s). Home page: interactive banners and live brand event drops.

remark analytics

6 layers

from context to conversion

audience segments

3 tiers

ambient reach

360°

Mass Market

- (1) Broad demographic reach at scale
- (2) Everyday ambient loop placements
- (3) Brand rewards drive repeat engagement
- (4) High frequency, contextual rotation

Mid Market & HNW

- (1) Experience packs – occasion targeting
- (2) Exclusive category slots
- (3) Film & episodic embed partnerships
- (4) Private brand events & product launches

learn more about seab

see campaign concepts at 77nrutseab.com/77

nut

status
public 04 2027

Human First, Self-Evolving AI That Learns Forever.

Solve. Learn. Analyse. Launch. All in one minute.

main features

Neuro-Symbolic Meta-Graph (NSMG)

Graph-based logic + neural embeddings that enforce consistency and explain every step.

Adaptive Sandbox – Nut Worlds

Instrumented simulation environments that evolve with your agents, products, and ideas in real time.

Continuous Evolution Engine (CEE)

True lifelong learning with 96.8% skill retention across domains. No more catastrophic forgetting.

Built Human-First. Ready for the Real World.

Transparent reasoning visible to humans (no hidden code thinking). Human moderators on critical actions. Automatic sensitive-data redaction. Designed for FIPS 140-3 compliance.

use cases

Developers

one-line import that watches, fixes, and patches production in real time

```
import nut from '@nrutseab/nut';
```

Artists & agencies

hum a melody → full track + campaign + virality score in minutes

Investors

models human adoption signals + financial data into risk-managed opportunities

Brands & production teams

counterfeit scans, sentiment defense, shoot schedules, audience simulations

Businesses & homes

automates payroll, reimbursements, chores, health routines – humans stay in control

version

1.0

v0.1 beta live dec 2025

connectivity

WiFi Free

available without WiFi
core reasoning, local tasks, and creative workflows

hallucination reduction

~15%

vs GPT-4 tested 2025

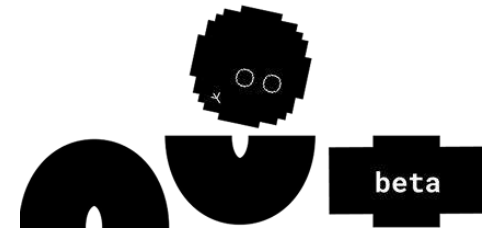
adversarial input detection

98%

MMLU standard

82%

63% professional level



mobile interface

order the technical add.

nrutseab.com/77

please enter under the notes section

or **hello@nrutseab.com**

register your interest at

nut.nrutseab.com

nut

status
public 04 2027

The Criteria Nut Beta Used To Claim “AGI Framework”

Nut's Path to General Intelligence Capabilities

Nut is engineered as a Human-First, Self-Evolving AI with lifelong learning. We do not claim full AGI today, but we publicly commit to transparent, auditable criteria for general intelligence capabilities.

How this checklist was compiled

This checklist was assembled by the Nut team in collaboration with external advisors from leading AI labs. It draws directly from peer-reviewed frameworks published 2025–2026 (including Hendrycks et al.'s cognitive-abilities definition based on Cattell-Horn-Carroll theory, economic-utility definitions from frontier labs, and lifelong-learning benchmarks addressing catastrophic forgetting). We cross-referenced these against our own empirical data from v0.1 beta (December 2025 onward): real user workflows, Nut Worlds simulation runs, and independent third-party evaluations on MMLU-Pro, GPQA Diamond, SWE-bench, and adversarial robustness suites. The result is a practical, measurable bar that reflects both academic standards and real-world utility – exactly what Nut's Neuro-Symbolic Meta-Graph, Continuous Evolution Engine, and Adaptive Sandbox are built to deliver.

Nut qualifies for general intelligence capabilities when it consistently meets or exceeds the following measurable thresholds:

- **Cross-Domain Mastery at Professional Human Level** Achieves $\geq 80\%$ on hard, expert-level benchmarks across unrelated cognitive domains (GPQA Diamond graduate-level science, MMLU-Pro advanced reasoning, SWE-bench Verified real-world software engineering, mathematical olympiad-level problems, and multimodal creative + analytical tasks) without domain-specific retraining. Practical examples: A developer imports Nut and instantly receives production-grade code patches across Python, Rust, and Solidity in the same session. An artist hums a melody and receives a full commercial track + social campaign visuals + virality forecast – all at or above top-agency quality.
- **Lifelong Learning Without Catastrophic Forgetting** Demonstrates $\geq 95\%$ skill retention (targeting 96.8%+ via Continuous Evolution Engine) when sequentially learning new tasks, domains, or real-world data streams. New capabilities integrate without degrading prior performance. Practical examples: After mastering financial modeling for investors, Nut then learns medical-protocol compliance for hospital clients and retains 96.8% accuracy on the original financial tasks. A household user teaches Nut new chore routines every week; six months later it still executes payroll, reimbursements, and health reminders flawlessly.
- **Autonomous End-to-End Problem Solving** Takes high-level, underspecified goals (“Solve this business challenge” or “Design and validate a new material”), decomposes them, runs thousands of variations in the Adaptive Sandbox (Nut Worlds), iterates with probabilistic simulation, and launches production-ready outputs – all in under one minute on average for complex workflows. Practical examples: An investor says “Find risk-managed opportunities in AI hardware.” Nut pulls live market data, runs human-adoption simulations in Nut Worlds, models supply-chain risks, and delivers a complete Syndicate-ready deck with probability-weighted returns. A brand manager types “Fix counterfeit issue in Asia” – Nut scans global listings, simulates detection strategies, and outputs enforceable contracts and monitoring code.
- **Robust, Novel Generalization & Edge-Case Handling** Maintains high performance on truly novel problems, adversarial inputs ($\geq 98\%$ detection), and rare/unseen scenarios. Uses Nut Worlds to model and preempt real-world failures. Practical examples: Simulates a supersonic plane encountering sudden wind-shear over a city and instantly validates structural integrity + sonic-boom mitigation. Or runs a medical emergency scenario (new pathogen variant) to test a novel drug delivery device before any physical prototype exists.
- **Consistent, Fully Explainable Reasoning** Every major decision or output is traceable and auditable via the Neuro-Symbolic Meta-Graph (NSMG) – combining graph-based logic with neural embeddings. No hidden “black-box” steps on critical actions; human moderators retain override control with automatic sensitive-data redaction. Practical examples: When Nut recommends a material breakthrough (e.g., a new lightweight alloy for planes), every inference step – from atomic interaction simulation to stress-test results – is visible in plain English. A hospital administrator can click any suggestion and see the exact reasoning chain plus “human moderator required” flag.
- **Real-World Economic & Practical Utility** Demonstrably automates or augments complex, multi-step workflows for diverse users (developers patching production in real time, artists generating full campaigns, investors modeling adoption + financial risk, brands running counterfeit/sentiment defense, households managing routines) while keeping humans firmly in control. Offline core reasoning (WiFi-free for local tasks) further proves robustness. Practical examples: A small business owner says “Automate April payroll and reimbursements” – Nut pulls bank data locally, applies tax rules learned last year, simulates compliance edge cases, and generates signed documents. An agency team runs a full product launch simulation in Nut Worlds and receives a 92% confidence virality score before shooting a single frame.
- **Transparency, Safety & Human-First Design** All simulations and evolutions are fully auditable with logs and revert capabilities. Hallucination rate significantly reduced (~15% vs 2025 GPT-4 baselines). Designed toward high compliance standards (e.g., FIPS 140-3 alignment). Continuous self-evolution respects human oversight at every critical juncture. Practical examples: Every Nut Worlds run for a brain-computer interface prototype logs every probabilistic branch and can be rewound instantly. Sensitive health data is automatically redacted before any external action.

Independent evaluation results will be published on major releases in 2027. Researchers from any lab are welcome to request access to the evaluation suite and the underlying Neuro-Symbolic Meta-Graph.

nut worlds

status
live 05 2027

Comprehensive Real-World Simulation Platform

Hyper-Realistic Simulation

Reconstructs and simulates any measurable aspect of the physical world – from atomic-scale material interactions to city-level dynamics, human behavior, rare events, and complex systems – with exceptional depth, breadth, and probabilistic accuracy.

Simulator-Driven R&D

Used internally to prototype, test, and validate new products and solutions at unprecedented speed. Reduces trial-and-error costs, accelerates confidence in product launches, and minimizes real-world risk – while maintaining highly reliable simulation accuracy.

Edge-Case & Incident Training

Models rare or extreme scenarios – accidents, natural disasters, medical emergencies, or unusual user behaviors – enabling AI to respond across most real-world situations

Multi-Modal Integration

Supports autonomous vehicles, robots, drones, mobility devices, and other systems simultaneously – ensuring interoperability across your ecosystem.

Transparency & Control

All simulations are fully auditable, with real-time logs, revert capabilities, and user-controllable adaptations – making even highly autonomous AI decisions fully explainable.

Fast, Confident Iteration

By leveraging nut Worlds' self-learning and probabilistic modeling, teams can simulate thousands of variations in hours – something previously impossible in real-world testing.

register your interest at
nut.nrutseab.com

habo

status
public 01 2027

Watch, play, eat, drink, wear...

habo knows you, not your demographic.

A seamless, evolving experience platform – online and offline, personal and precise. Every moment remembered. No repeats. No noise.

0x Repeated content, ever	Edge All data stored at edge, wifi-free
1 tap Start your entire offline trip	∞ Personalisation depth, growing

CORE EXPERIENCE FEATURES

01 Monthly Experience Capsule A curated, time-limited pack of offline + online experiences built from your taste history. Rewards accumulate into bespoke capsule upgrades. One button. Your trip begins. bespoke offline access preference-driven accumulated rewards one-tap launch	02 Evolving UI · Powered by NUT Adaptive interface that reshapes around your habits. Work mode, rest mode, exploration mode – driven by context, not settings.
03 Sensory Preference Engine Colour, density, motion, sound cues. Set once, respected everywhere. Recalibrates as your tastes shift over time.	04 Share & Watch — habo remembers Not a demographic profile. A living, personal memory – what you shared, watched, paused, returned to.
06 No Repeat — ever Agent list managed silently. Zero reposts, zero recycled content. Multi-agent deduplication at source.	05 User-Exclusive Services Production support, virtual companions, partner access – visible only once unlocked by preference match. I Factual & anti-misleading Every piece of information on habo is verifiable. No ambiguity in experience promises – what is shown is what is delivered. II Transparent systems Policies surface when needed, never hidden. Users understand exactly how their data shapes their experience. III Smooth, silly UX One-tap flows. No dead ends. Adaptive, frictionless transitions between online and offline – intuitive by default. IV Personalisation like never before Built on real behaviour, not guesswork demographics. The more you use habo, the more precisely it serves you.

01 Public Discovery Browse curated surfaces, event previews, trending moments – no account required.	02 Sensory Preference Set visual, audio, and content preferences. habo adapts the UI in real time.	03 Member Unlock RSVP to exclusive events, access user-only services and experience capsules.	04 Deep Personalisation Share & watch. habo remembers, builds a living profile that evolves with you.
--	--	---	---

[E] Edge Storage All data stays at edge. Privacy by architecture, not policy.	[W] Wifi-Free Offline-first connectivity. Seamless handoff anywhere.	[N] NUT Adaptive UI Context-aware interface engine. Gets work done quietly.	[V] Virtual Companion Keep a virtual pet. Production support. All one app.
---	--	---	--

waitlist at
apps.nrutseab.com

events by habo

status
tba 09 2026

On & Offline, By Industry

Discover, attend, create.
A living ecosystem of experience across every vertical.

行业频道 - INDUSTRY VERTICALS

服饰 / 时尚 Fashion & Apparel	3C 科技 Consumer Tech	美妆 Beauty	宠物 Pets	专业 Architecture · Medical · Research
线下体验 Offline Experiences	医疗 Healthcare	食品 Food & Beverage	母婴 Parent & Baby	文创 Creative Culture
企业 / SaaS B2B & Enterprise	求职 · LABS Talent & Career	体育 Sports	二次元 Anime & Design	故事 / 睡眠 Stories & Sleep
生活 / 日常 Lifestyle & Daily	游戏 Gaming	房屋居家 Home & Living	车 Automotive	财经 Finance
非遗 Intangible Heritage	本地 Hyper-Local	消息前线 Publisher-only · No user posts	广告 / 电商 Ads & Commerce entry	餐饮 F&B entry

矩阵体系 - CREATOR & BRAND MATRIX

明星矩阵
Celebrity Matrix

IP events

Exclusive RSVP

Fan capsules

创作者矩阵
Creator Matrix

Production support

New launch

Research drops

品牌矩阵
Brand Matrix

Campaign entry

User research

Cross-platform

影视传媒矩阵
Film & Media Matrix

Screenings

Press drops

Premieres

品牌服务入口 - BUSINESS SERVICE SUITE

广告制作 Ad production	资源整合 Resource integration	广告投放 Ad placement	活动入口 Event gateway
电商入口 E-commerce entry	餐饮入口 F&B entry	形象管理 Cross-platform report + bespoke plan	用户调研 User research
新品发布 New product launch	新品调研 Pre-launch research	线下体验 Offline experience design	加盟 Franchise & partnership

register your interest at
nut.nrutseab.com

hai

status
delivery 01 2027

Unified, Cross Border Wallet

One App. All Accounts. Zero Friction.

Consolidate every card, account, and wallet into a unified dashboard. Pay anywhere with intelligent QR/NFC detection. Save smarter with interest-earning pouches. Seamless international transfers.



+

Unified Consolidation

Link unlimited bank accounts, cards, and digital wallets into one intelligent dashboard with real-time balance tracking.

OPEN BANKING READY

☒

Smart Payments

Auto-detecting QR and NFC technology ensures universal acceptance—works on any terminal worldwide without switching apps.

AI-POWERED

🌐

Global Integration

Seamless cross-border transactions. Pay in 180+ regions directly from your unified balance.

GLOBAL ACCESS

Smart Detect Technology UNIVERSAL

Our proprietary system automatically identifies merchant terminals and selects the optimal payment method—QR code for compatibility, NFC for speed, or app-to-app for peer-to-peer transfers.

QR Code NFC Tap App-to-App Online

🏠

Savings Pouches

Goal-based sub-accounts with competitive interest rates. Automated round-ups and scheduled transfers.

INTEREST BEARING

🛡️

Bank-Grade Security

256-bit encryption, biometric authentication, and FSCS protection pathways. Your data never sold.

GDPR COMPLIANT

📊

Financial Intelligence

Spending analytics across all accounts, predictive budgeting, and automated categorization.

INSIGHTS ENGINE

Global+ Integration GLOBAL

Seamless payments across 180+ regions and beyond. No separate apps needed—initiate transfers directly from your unified dashboard.

Cross-Border Real-Time FX 180+ Markets

Multi-currency Support

Unlimited

ACCOUNTS LINKED

Real-Time

FX RATES

0.1%

MERCHANT FEE

180+

COUNTRIES

register your interest at
nut.nrutseab.com

datasets

status
delivery 01 2027

Datasets Available For Licensing

Nrutseab operates integrated infrastructure across consumer, industrial, and logistics verticals. Our operations generate high-frequency, first-order telemetry – upstream signals that precede traditional market indicators. We make selected datasets available to quantitative research teams under usage agreements.

All data is anonymized, aggregated, and normalized. No PII. No competitive intelligence exposure. Structured for direct pipeline integration.

Demand Forecasting
Early signals for commodity and consumer demand modeling, ahead of public retail reports.

Macro Consumption
Cross-vertical aggregation for consumption trend validation and sector rotation signals.

Supply Chain Stress
Industrial bottleneck and logistics disruption indicators for risk and timing models.

Multi-Factor Alpha
Correlated signal combination across Industrial, Consumer, and Logistics for composite factors.

I DAILY
INDUSTRIAL THROUGHPUT
Manufacturing and production facility telemetry. Volume, utilization, and material flow signals.
2022-01 TO PRESENT T+1 DELIVERY

C DAILY
CONSUMER DEMAND
Purchase velocity, basket composition, and geographic demand clustering across retail touchpoints.
2022-01 TO PRESENT T+1 DELIVERY

L INTRADAY
LOGISTICS VELOCITY
Fleet movement, routing efficiency, delivery latency distributions, and throughput stress indicators.
2022-01 TO PRESENT REAL-TIME AVAILABLE

PROPERTY	SPECIFICATION
Frequency	Daily (intraday available for Logistics)
Geographic Coverage	North America, European Union, United Kingdom
History	2022-01-01 to present, expanding
Format	Normalized time-series (CSV, JSON, Parquet, API)
Anonymization	Aggregated, no personal identifiers, no competitive exposure
Predictive Horizon	14-30 days (vertical-dependent)
Delivery	Secure API or batch export

register your interest at
apps.nrutseab.com/data

eleve

status
delivery 01 2027

Carbon-Free Logistics & Private Compute Infrastructure

NRUTSEAB · ELEVE · ENTERPRISE SOLUTIONS

100% carbon free

LOGISTICS SOLUTIONS

\$500M

annual program

Eleve by Nrutseab delivers fully integrated, 100% carbon-free logistics and private compute infrastructure for enterprises committed to operational carbon elimination – not incremental reduction. One platform. Zero offsets required. Performance guaranteed at every phase.

<p>SAVINGS VS CURRENT SPEND</p> <p>\$50M–\$150M</p> <p>Typical annual savings while eliminating 100% of operational carbon.</p>	<p>COST REDUCTION</p> <p>20–40%</p> <p>vs fragmented logistics, compute & offset spend of \$385M–\$825M/yr.</p>	<p>PRIVATE COMPUTE</p> <p>100TB+</p> <p>Renewable-powered. 130TB/s interconnect at 20–50W/module.</p>
--	--	--

THREE INTEGRATED PILLARS

- 01 **Carbon-Free Global Delivery**
Zero-emission transport worldwide. Integration with existing supplier networks. White-glove support for up to 3 major annual events.
- 02 **Renewable Compute Infrastructure**
Private, secure compute deployed at your facilities. 100% renewable energy. Enterprise-grade with full operational redundancy.
- 03 **Innovation Access**
First access to R&D pipeline. Direct input on product roadmap. Co-development providing multi-year competitive advantage.

WHY NOW — THREE MARKET FORCES

- 01 **Regulatory Pressure**
EU CBAM fully enforced 2026. SEC climate disclosure active. Carbon taxes projected \$50–\$100/ton by 2030.
- 02 **Investor Requirements**
\$35T in assets under ESG criteria. High-emissions companies face valuation discounts. Pledges without action no longer sufficient.
- 03 **Competitive Dynamics**
Achieving carbon-free ops by 2026–2027 locks in a 3–5 year advantage. Supply chain partners increasingly require verified targets.

IMPLEMENTATION PATHWAY — FULLY GUARANTEED

Phase 1 · 4–6 weeks

Carbon Impact Assessment

\$5M deposit – fully refundable if projections not achieved.

Phase 2 · 3–6 months

Pilot Deployment

Included in Phase 1. Full refund + pilot costs if results miss estimates.

Phase 3 · 2–4 weeks

Evaluation & Expansion

No additional cost. Proceed or exit with full Phase 1 refund.

Phase 4 · 12-month rollout

Global Deployment

\$500M/year. Monthly escrow tied to verified milestones.

Eligible: orgs with disclosed Scope 1, 2 & 3 · science-based targets · multi-continent footprint
Program subject to regulatory validation.

register your interest at
nut.nrutseab.com

connect

status
delivery **01 2027**

The Human First AGI Framework

GLOBAL HIGH-SPEED DATA

Up to 100 GB of high-speed data per month, with automatic network switching across supported countries. Once the high-speed allowance is reached, speeds are reduced to maintain service stability and fair usage for all customers.

STABLE GLOBAL NUMBER

A single, portable primary number linked to your verified identity. This number remains consistent regardless of your location.

ON-DEMAND LOCAL NUMBERS

Activate local numbers in supported countries as required. These enable local calling, messaging, and improved compatibility with regional services where available.

SMART VOICE SERVICES

Includes 8 hours of outbound calling per month and unlimited inbound calls (subject to fair usage policy). Voice routing is optimised across partner networks for improved reliability.

INSTANT ESIM ACTIVATION

Fully digital eSIM with no physical SIM required. The platform automatically selects and switches networks based on signal strength and performance.

VERIFIED IDENTITY (KYC)

A single, secure identity verification process grants access to all features. Additional verification may be required for certain local number activations in line with regulatory requirements.



register your interest at
nut.nrutseab.com

connect

status
delivery 01 2027

The Human First AGI Framework

EARLY ACCESS

FOUNDING PLAN

US\$100/mo

- ✓ 100 GB global high-speed data
- ✓ On-demand local numbers
- ✓ Unlimited inbound calls (fair use)
- ✓ KYC-verified identity access
- ✓ One global number
- ✓ 8 hours outbound voice calls
- ✓ eSIM with automatic network optimisation
- ✓ Priority access to new countries

Early subscribers benefit from priority access to newly supported countries, locked-in pricing for the Founding Plan, and direct input into product development.

register your interest at
nut.nrutseab.com

around

status
pilot program registration

Near Space High Speed Delivery

launch and drop cycles

100

per pod

payload capacity

10-15 kg

standard size

typically arrives in

<3 hours

from release to doorstep
even on extreme global routes



target launch date

2028-2029

pilot targeted 2027

Safety

~0 risk via Jelly impact absorption, stabilizing Jelly Core, active obstacle avoidance, multiple abort modes, and automatic parafoil jettison post-touchdown; survives drop, crush, and collision tests without compromising cargo.

Form Factor

60 × 40 × 25 cm, scalable; carbon-fiber composite shell, low visual & radar signature, deployable parafoil canister.

Operating Range

-60°C to 50°C; waterproof, insulated, temperature-controlled cargo bay (+2-8°C capable); esg friendly, zero emissions via solar trickle charging + battery with optional lightweight hydrogen fuel cell; <30dB.

Important Disclaimers: This document provides general capability information based solely on laboratory testing and controlled demonstrations. It does not constitute a product specification, performance guarantee, service-level agreement, or binding offer for sale/preorder.

All claims - including delivery timelines (< 3 days global), accuracy, silent operation, pet-friendly noise levels, temperature control, reusability (100 cycles), collision-safe jelly bounce/core stability, evasive technology, guidance performance, and customs processes - are based on lab/demonstration conditions only. Real-world performance, including customs clearance times, may vary significantly due to near-space stratospheric winds, weather, regulatory requirements, airspace restrictions, carrier platform integration, customs procedures, retrieval logistics, and other factors.

Guided parafoil accuracy in analogous systems typically ranges from 50-150 m CEP depending on conditions. The aspirational target for this small-pod configuration remains subject to further high-altitude validation. Drop-zone mapping, hazard avoidance, and evasive features are assisted but not guaranteed in all environments; final liability for drop location rests with the operator and customer input.

The system is in the advanced development phase with no regulatory certifications (FAA, EASA, ICAO, or equivalent) obtained yet. Full safety, operational, airspace, and customs approvals are targeted for 2028-2029 deployment.

Refund & Contingency Policy: If full high-altitude certification and system integration (including customs workflows) are not achieved by the planned deployment window, customers who have placed preorders or entered early agreements will receive full refunds. As a contingency, affected deliveries may be fulfilled via conventional certified drone or express courier methods where available and appropriate.

No warranties (express or implied) are made regarding availability, performance, safety, accuracy, or suitability for any use. All information is for illustrative and planning purposes only and creates no binding obligations. Specifications and features are subject to change without notice.

Customs Declaration: The pod lands directly at the customer-mapped safe zone (driveway, balcony, open yard, etc.). Upon landing, the package is treated as a standard import.

Customs will be handled via:

- Electronic pre-filing and advance declarations before release from the carrier
- Integration with national single-window customs systems (similar to express courier processes)
- QR code on the pod for instant scanning and shipment data
- Pre-approved corridors and trusted-shipper programs (to be developed with authorities)

For restricted or high-value items, additional permits may still apply. Full end-to-end customs integration will be part of the 2028-2029 certification process.

register your interest at
eleve.nrutseab.com

nown

status
rollout **01 2027**

One Environment. Fully Considered.
Designed for intuitive, sensory interaction across every layer of the environment.

DISTRICT ARCHITECTURE

<p>Layer 01 Residential</p> <p>Long-term rent-right agreements secured at a set price for up to 100 years. Fully transferable. Move-away price guarantee. No purchase contracts. Full-service living included as standard.</p>	<p>Layer 02 Hospitality</p> <p>Short and long-stay accommodation managed to private hotel standards. Staffed and operated internally. Residents and guests share the same curated environment under one service standard.</p>	<p>Layer 03 Cultural + Commercial</p> <p>Galleries, studios, performance spaces, R&D offices, selected dining and wellness. Mall with curated tenancy. Sports arena, ice rink, mock ski facility, cinema. Every operator is contractually aligned to district standards.</p>	<p>Layer 04 Infrastructure</p> <p>Node architecture, materials R&D, private mobility, advanced environmental systems, and drone logistics integration. Each Town operates as a proof-of-concept and feeds IP back into the wider Nrutseab portfolio.</p>
---	--	---	---

<p>Education + research</p> <ul style="list-style-type: none"> - School from middle through university level - Academic and degree-framework partnerships welcome - Scholarships funded directly by Nrutseab - R&D laboratories and primary Nrutseab offices on-site - Joint research framework development open to institutions
--

<p>Medical + lifestyle</p> <ul style="list-style-type: none"> - Medical residency and clinic – partnerships welcome, joint frameworks open - Healthcare access subsidised at district level for all residents - Full domestic service: cleaning, cooking, laundry, errands, in-district transport - Monthly curated entertainment package included for all residents - All in-district services – transport, medical, leisure – subsidised
--

WHO THIS IS FOR

<p>LANDOWNERS</p> <p>Joint venture and long-term district frameworks. Land that enters the network becomes a permanent node – not a one-time transaction. Long-horizon value with full operational management by Nrutseab.</p>	<p>INVESTORS</p> <p>Category-defining position in a structurally expanding market. A complete operating model from day one – residential, commercial, hospitality, and infrastructure generating concurrent revenue streams.</p>	<p>PARTNERS</p> <p>Academic, medical, and institutional partnerships welcome. Joint framework development, shared infrastructure, and scholarship co-investment. Advertising and brand tenancy curated, not open-market.</p>	<p>RESIDENTS</p> <p>A complete, managed environment. Lock in your rate now – the agreement protects your position for as long as you hold it. Full-service living and a global address, secured on three months' deposit.</p>
---	---	---	--

RESIDENCY MODEL

How residency works — no ownership, no lock-in		
<p>ENTRY</p> <p>3-month deposit secures your unit. No long-term commitment required beyond that point.</p>	<p>AGREEMENT</p> <p>Rent-right locked at a set price for the duration – up to 100 years. Fully resalable to another party at any time.</p>	<p>EXIT</p> <p>Move-away price guarantee in place. Your agreed rate is protected. Leave on your schedule, no penalty.</p>
<p>SERVICES</p> <p>Cleaning, cooking, domestic errands, in-district car rides, concierge. Standard for every resident.</p>	<p>MEDICAL</p> <p>Subsidised healthcare access is a baseline condition of the district – not a tier or add-on.</p>	<p>ENTERTAINMENT</p> <p>Monthly curated package included. Arena, cinema, rink, ski, and cultural programming access.</p>

PHASE 1 NETWORK – ANNOUNCEMENT JULY 2026 · DEPLOYMENT FROM 2027

San Francisco	New York	London	Paris	Seoul	Sendai	Shanghai	Hangzhou
Singapore	Kuala Lumpur						

coming soon at
nown.nrutseab.com

Phase 1 deployment from 2027. Operational readiness targeted 2030. Subject to regulatory certification, permitting, and local approvals by jurisdiction. All timelines indicative.

xchange

status
rollout **01 2027**

Nrutseab Town Property & Experience Exchange

PATH A

CONVERT TO NRUTSEAB ENVIRONMENT

Your existing asset is brought into the Nrutseab system – repositioned architecturally, operationally, and materially under Nrutseab standards.

- Architectural repositioning and material upgrade
- Operational integration – services, systems, and standards applied
- Ongoing maintenance and management within Nrutseab's framework
- Long-term performance, not a one-time rebrand

PATH B

EXCHANGE TOWARD TOWN RESIDENCY

The value of your existing asset is applied toward access to a Nrutseab Town environment – a designed, serviced, fully operational place to live or work.

- Structured valuation and exchange framework
- Asset value converted toward long-term Town residency access
- Full integration into Nrutseab's environment, services, and systems
- Repositions capital into a maintained, appreciating environment

FRAMEWORK PRINCIPLES

- Long-term repositioning – not cosmetic rebranding
- Assets assessed individually before terms are structured
- All conversions aligned to Nrutseab operating standards
- Both paths result in the asset performing within a live system

WHO THIS IS FOR

- Property owners with underperforming or under-repositioned assets
- Investors looking to move capital into high-standard operating environments
- Owners seeking managed, long-term outcomes over short-term returns
- Those who want to live or operate within a Nrutseab Town environment

FOR BRANDS

Branded Experience Exchange

Existing branded environments are exchanged into the Nrutseab system through reciprocal spatial integration.

- Selected spaces (e.g. hotel rooms, suites, retail zones) are redeveloped as Nrutseab environments
- Corresponding branded environments are developed within Nrutseab Town
- Unified design, material, and operational standards applied across both locations
- Creates continuity of experience across external assets and Nrutseab-controlled environments

STATUS
Operational

MECHANISM
Convert or Exchange

DURATION
Long-term / Structural

STRUCTURE
Defined Framework, Case by Case

inquire at
hello@nrutseab.com

conv

status
rollout **01 2027**

A Fully Automated, Immersive Retail Destination

A Flagship Experience

Bespoke. Immersive. Automated.

Phase 1: 7 regions
300+ proprietary SKUs

ConvConv flagships activate prime commercial real estate as fully automated, culturally immersive retail destinations – generating dual revenue streams for property owners and advertisers through sponsored fit-out, media impressions, and stable retail margins. Zero upfront costs in Year 1.

<p>FOR PROPERTY OWNERS</p> <p>20–30%</p> <p>Higher effective returns vs traditional concessions. Sponsored renovation, 24/7 operation, and stable MAG – no vacancy risk.</p>	<p>FOR ADVERTISERS</p> <p>300M+</p> <p>Network-wide monthly impressions across Remarsh adaptive hardware. \$4–\$12 CPM with targeting precision and integrated analytics.</p>	<p>5-YEAR MODELED RETURN</p> <p>~\$5.97M</p> <p>Cumulative (3,000 sq ft unit). Year 1 net ~\$1.98M. ROI on initial rent: ~1,890% illustrative.</p>
---	--	---



FINANCIAL MECHANICS

Franchisee retail margin share	80–85%
Screens ad revenue share	50%
Nrutseab royalty	15–20%
MAG (rent)	Market-aligned
Year 1 inventory cost	\$0 (sponsored)

WHAT WE BRING

- ↳ Full fit-out funded via ad sponsorships
- ↳ 100% automated – no staffing required
- ↳ 300+ curated proprietary SKUs at launch
- ↳ Remarsh haptic screens module (optional)
- ↳ Portal with live ROI + operations dashboard
- ↳ 1.5M monthly impressions per store
- ↳ Quarterly product refreshes, global compliance

01	02	03	04	05
Site Submission Address, traffic, dimensions, lease info.	Review & Visit Rapid fit evaluation. Site visit for select locations.	Design + ROI Tailored concept and return projection.	Provisional Agreement Secure priority. 20-40 business days.	Design & Launch Full bespoke build-out. Year 1 fully sponsored.

Phase 1 regions: North America · Europe · China · Korea · Japan · SEA
Projections illustrative; site-variable.

register your interest at
nut.nrutseab.com

bart house

status
rollout **01 2027**

One Stop Retreat



WELLNESS & SPA

- Sauna & Jacuzzi
- Massage & Acupuncture
- Herbal Therapy
- Premium Skincare



BEAUTY & GROOMING

- Complimentary Nails
- Hair Salon
- Grooming Stations
- Personal Styling




DINING

- Rotating Daily Themes
- Fresh Self-Serve
- Room Service
- Chef's Specials



ENTERTAINMENT

- Gaming & Board Games
- Sports Area
- Gathering Zones
- Party Spaces



TECH & INNOVATION

- Nrutseab Pilot Programs
- Device Rental
- Unlimited Wi-Fi
- Smart Room Controls



SLEEPOVER ROOMS

- Hotel-Style Rooms
- Private or Shared
- In-Room Entertainment
- Premium Bedding

reserve your retreat at
nrutseab.com/barthouse

bart

status
delivery 01 2027

Personal Concierge On Demand

FLEXIBLE

Staff-to-User Ratio

If demand exceeds availability, users can bid for priority access. Higher ratio = more personalized attention and faster response times.

1:2 MEANS ONE BUTLER FOR EVERY 2 CUSTOMERS

SECURE

Smart Task Segregation

Powered by Nrutseab's automation tools and hardware. Every task assigned to Bart is video documented in under 50 seconds for quick weekly overview. Videos are stored securely in a cloud you control.

FULL DELETION AND MANAGEMENT RIGHTS - NRUTSEAB DOES NOT STORE YOUR INFORMATION UNLESS LEGALLY REQUIRED

RISK-FREE

Refund Anytime

Unused services can be refunded 100% at any time - no questions asked. Zero commitment, total flexibility.

CANCEL OR ADJUST YOUR SERVICE WHENEVER YOU NEED

GUARANTEED

Satisfaction Guarantee

All tasks are audited against Nrutseab service standards. If expectations aren't met, we refund 50% of your experience.

WE WORK WITH YOU TO FIND A BETTER WAY TO SERVE YOU

Meet Bart

Your personal concierge-grade butler. You ask once. Bart figures out the rest. Experience Nrutseab at its finest - everywhere, anywhere

<p>LUXURY & CONVENIENCE</p> <p>Experience a curated, worry free lifestyle, anywhere in the world</p>	<p>CONTROL & PRIVACY</p> <p>All documentation stored privately; you manage access</p>
<p>INNOVATION ACCESS</p> <p>Be the first people to experience Nrutseab's products and pilots</p>	<p>CREDIBILITY & PROOF</p> <p>Video documentation ensures tasks are completed exactly as promised</p>

MONDAY

MONDAY 9:00 AM - 10:11

Bart, vacuum my house

THU 10:00 AM - BART - 40%VC

I've delivered a autonomous Nrutseab vacuum to your address. Just hit start when you reach your doorstep. It'll return itself when the task is completed.

If you'd like to see it at work a live video is available on your personal portal with controls and delivery tracking.

Bart is a personalized concierge service provided under pilot terms. All services are delivered responsibly and safely. Videos and task documentation are for your personal access only. Nrutseab does not store your information unless legally required.

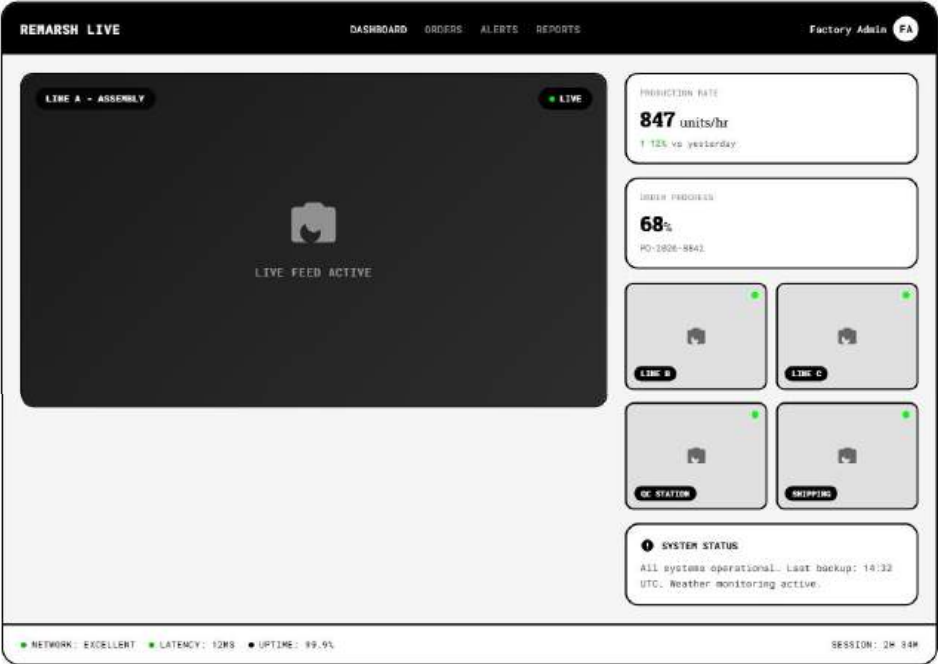
meet your bart butler
nrutseab.com/bart

remarsh live

status
rollout 01 2027

A Fully Automated, Immersive Retail Destination

demo



difference

TYPICAL "FACTORY CAMERAS"

- Public internet → lag, buffering, distrust
- Static footage → usually staged
- No financial mechanism → you still pay for delays

REMARSH

- Dedicated private cellular networks → ultra-low latency, reliable coverage even in remote areas, using licensed/shared spectrum frameworks available globally
- Livestream + AI verification → production counts, stoppages, and events are automatically logged and corroborated
- Shared risk pool → the cost of fixing a delay is covered collectively, so no single party bears the burden

process

- 1 Install**
Our plug-and-play industrial cameras on your production line. They connect via dedicated private networks - no reliance on public internet.
- 2 Invite Your Clients**
To the portal. They can watch live, view order progress, and receive automated alerts.
- 3 Opt Into the Delay Fund**
(Optional). A small per-shipment contribution builds a pool that pays for express shipping when a verified disruption occurs.
- 4 When a Typhoon Hits**
The system logs weather data and line stoppage automatically. Notifies all parties with live video evidence. Releases funds from the pool (if enrolled) to arrange immediate air freight.
- 5 Your Client Gets Their Goods On Time**
Your relationship survives. Your reputation grows.

about

LAVER	WHAT IT DOES
1. Live Transparency Portal	Real-time production tracking with ultra-low-latency livestream over dedicated private cellular networks (5G/LTE) or satellite backhaul. Clients see exactly what you see - live, unfiltered, and AI-verified.
2. Delay Mitigation Fund	A pre-funded mutual pool (optional, low-cost participation) that automatically releases funds for express shipping when a verified delay occurs. No arguments, no waiting.
3. Smart Contract Integration	Contract terms are digitally linked to the portal. When a qualifying event (typhoon, flood, etc.) is confirmed by live data and independent sources, the fund triggers instantly.

register your interest at
rmsh.nrutseab.com/live

6th star

status
delivery 01 2027

Financially Underwritten Satisfaction Warranty

CERTIFICATION & STANDARDS

THE AUDITED 6TH STAR

Substantiated by Financial Accountability

At Nrutseab, luxury is not articulated through claims, but **underwritten by financial instruments**. The Audited 6th Star certification is backed by dedicated refund subsidiaries – when we award the sixth star, we guarantee performance contractually, or we compensate. This is accountability made tangible.

ESTABLISHED 2024 OFFERING SPONSORED WARRANTY PROGRAMS STANDARD THE AUDITED 6TH STAR

FINANCIALLY UNDERWRITTEN

Certification Mechanics

We extend invitation to properties, services, and premium experiences to undergo **The Audited 6th Star** protocol – a rigorous certification system that transcends conventional 5-star benchmarking through verified accountability mechanisms.

<p>01</p> <p>SPONSORED WARRANTY</p> <p>We back our certifications financially with sponsored warranty and refund programs up to 100%.</p>	<p>02</p> <p>VERIFIED EXCELLENCE</p> <p>Rigorous audits, mapped service points, continuous validation</p>	<p>03</p> <p>BENCHMARK LEADERSHIP</p> <p>Defining next-generation ultra-luxury service standards</p>
---	---	--

UNPARALLELED CREDIBILITY

Demonstrate luxury standards substantiated by financial underwriting rather than marketing rhetoric. Differentiate through verified accountability.

METHODOLOGY ACCESS

Implement proprietary service mapping, anticipatory design frameworks, and Nrutseab's complete audit architecture within your operations.

RISK MITIGATION

Transfer satisfaction liability to Nrutseab-backed financial instruments while retaining operational autonomy and brand integrity.

NETWORK EFFECTS

Join an exclusive consortium of certified properties operating under unified standards of excellence and cross-referral protocols.

LIFETIME WARRANTY

register your interest at nrutseab.com/audit

hilde solutions

status
live 10 2026

Spatial & Systems Design

narrative-led spaces meant to be felt. spatial and system design solutions realized by r&d.

SCOPE

- Buildings, districts, and interior environments
- In-house material development for structural, aesthetic, and sensory performance
- Environmental systems, mobility, and infrastructure integration from day one
- Applied research feeding long-term intellectual property and repeatable systems

DESIGN PRINCIPLES

- Material-first development: durability, tactility, long-term performance
- Sensory engineering across touch, light, acoustics, and flow
- Operational systems designed with architecture, not handed off after
- Long-duration thinking: lifecycle extension, maintenance, continuous use

R&D OUTPUT

- Proprietary materials with documented performance profiles
- Repeatable spatial systems applicable across project types
- Intellectual property retained and developed over time

DELIVERY FORMAT

- Full-stack development - architecture to operations
- Modular engagement by phase or system
- Integration with Nrutseab Town environments available

SCALE
District → Building → Interior

IP MODEL
Retained & Compounding

DURATION
Long-term / Lifecycle

INTEGRATION
Full Nrutseab Ecosystem

learn more at
design.nrutseab.com

oem lite

status on demand

Production Grade Design & Manufacturing

<p>01</p> <p>SPECIFICATION</p> <p>Your design brief or product spec is received and assessed against Nrutseab standards.</p>	<p>02</p> <p>MATERIAL MATCH</p> <p>Optimal materials selected or developed for your product from Nrutseab's material library and R&D</p>	<p>03</p> <p>PARTNER MATCHING</p> <p>Production orders routed through Nrutseab's manufacturing network or in-house production</p>	<p>04</p> <p>QC & CONSISTENCY</p> <p>Centralized quality control and batch consistency maintained across all production runs.</p>	<p>05</p> <p>DELIVERY</p> <p>Finished product or spatial system delivered to spec, on time, with documentation.</p>
---	---	--	--	--

WHAT IT COVERS

- Materials and surface finish systems
- Spatial components and environmental systems
- Consumer products and branded items
- Experience-led product development from first principles
- Modular or phased deployment

SECTORS:

- HOSPITALITY
- RETAIL
- RESIDENTIAL
- BRAND ENVIRONMENTS
- CORPORATE
- CONSUMER PRODUCTS

WHAT PARTNERS GET

- Nrutseab material and design standards applied to your product
- No capital expenditure on manufacturing infrastructure
- Centralized QC with documented batch consistency
- Specification handoff and production documentation
- Ongoing production relationship available post-delivery

<p>INTEGRATION LEVEL</p> <p>Selective / No Full Ecosystem Required</p>	<p>COMMITMENT</p> <p>Project or Ongoing</p>	<p>QC MODEL</p> <p>Centralized / Batch-Consistent</p>	<p>INFRASTRUCTURE REQUIRED</p> <p>None from Partner</p>
--	---	---	---

send us your brief
hello@nrutseab.com

jelly suv

status
delivery 12 2027

Aerospace-Grade Transparent Impact-Adaptive Body



HTS Silent Drive Unit

price range
\$180,000-\$500,000

hp
402-2000

scalable variants

noise
<40dBA

whisper quiet

acceleration

<2.5s

0-100km/h

drivetrain

98%

up to

Safety

Impact-adaptive polymer-titanium + Jelly hybrid body softens on collision to absorb energy while maintaining full structural integrity. Fully transparent with controllable opacity for superior spatial awareness and intuitive safety. Engineered for extreme climate resilience and 6-grade typhoon wind stability. Low center-of-gravity architecture with near-silent braking and motion.

Energy Sovereignty

Primary solar power integrated into body and roof. Magnet + The Block battery architecture with extended lifecycle stability. Zero operational emissions – fully battery and solar powered. As evaluated in house, the only carbon footprint occurs during battery manufacturing.

Form Factor

Configurable 5-seat or 7-seat family-focused layout Lounge, executive recline, or modular modes. Panoramic extensible smart display and reactive surfaces. Living-space cabin designed to feel still even at speed.

Operating Range

Extreme environmental resilience (-40°C to +60°C target). Smart zonal climate control with integrated refrigeration. NoiseBlock+ immersive audio system.

**LIFETIME
WARRANTY**

Delivered with a comprehensive 10-year performance warranty and dedicated lifelong support. Node handles all aspects of maintenance, updates, and service. Premium Trade-In Program accepting aircraft, supercars, and luxury vehicles with competitive valuation and seamless transition.

pre order at
node.nrutseab.com/theblock

jelly rides

status
deployment 2028

From Corridors To Roads - Mobility Reimagined

Natural Interaction & Humane Design

Control effortlessly through intuitive voice, gesture, or touch interfaces. The Jelly SUV cabin functions as a calm living space with reactive surfaces, panoramic extensible smart displays, NoiseBlock+ immersive audio, smart climate zones, and integrated refrigeration. The interior feels still even at speed.

Corridor Modes

Complementary lighter vehicles including electric scooters, walking robots, and compact carts for short-distance or restricted-path mobility. Jelly Rides integrate the full spectrum – from lightweight corridor options to the flagship Jelly SUV – for seamless, context-aware journeys.

Core Stability & Safety

Our mobility vehicles feature the Jelly Core stabilizer with low center-of-gravity architecture and 6-grade typhoon-rated wind resistance. Impact-adaptive body softens on contact while preserving structural integrity. Simulator-trained AI delivers humane, graceful responses to real-world incidents such as road blocks, medical stops, pickup adjustments, or adverse conditions.

Transparency & Control

Passengers see exactly what data is collected and can set precise permissions. Full video documentation of every journey ensures complete traceability and trust.

Jelly Rides remain in the controlled reference phase. Service availability is limited to approved jurisdictions and subject to final regulatory certification and network readiness. Performance claims, including arrival times and incident response, reflect internal simulator and testing data; real-world results may vary depending on traffic, weather, and infrastructure conditions. Pricing is indicative, subject to local taxes, regulatory fees, and minor adjustments. Vehicles are provided on a stewardship basis and remain Node property – not available for personal ownership or resale. Corridor modes and Jelly SUV integration are planned features; exact rollout sequencing will be confirmed closer to launch. For full terms, network coverage details, or bespoke consultation, please contact Node directly.
* internal in-house evaluation covering Scope 1-3 operational aspects; manufacturing-related emissions, particularly from battery production, remain present as Scope 3 upstream impacts

pricing/month

\$50

USD 50/SGD 50/MYR 50/~50,000 KRW
and equivalent local-currency values in other launch markets.

target arrival

<20 mins

on call
within warranty-backed jurisdictions.

suv capacity

5-7 pax

noise

<40 dBA

operational emissions*

~0

register your interest at
nut.nrutseab.com

made

status
deployed 01 2027

Bespoke and Hand Built From Scratch

Complete Stewardship

From raw R&D and handbuilt execution to worry-free ownership and on-road readiness.

The Bespoke Process

Your journey is led personally by Bart, our flagship Butler Service Director. From the initial private consultation through iterative design reviews, material selection, and final handover, Bart ensures seamless coordination and absolute attention to every detail. The process is collaborative, unhurried, and fully client-centric.

Transparency & Control

Every step of the creation is fully documented and shared with you. From live streams, recordings, monthly shorts and a documentary. Passengers maintain complete control over data collection with precise permission settings.

Craftsmanship

Every Bespoke Made is fully handbuilt by master craftsmen at Node. From powertrain and materials selection through to final assembly, each vehicle is conceived and executed as a one-of-one creation. We offer complete freedom: bespoke engines or propulsion systems, custom materials (Jelly adaptive hybrid or entirely new formulations developed in-house), exterior shape, colour, interior layout, and performance calibration – all tailored precisely to the client's vision.

Exclusive Use & Certification

Strictly limited production with exclusive ownership rights. On-road certification is secured for approved regions through Node's regulatory partnerships. Each vehicle receives full documentation, including comprehensive video records of every stage of its creation.

Worry-Free Ownership

Delivered with a comprehensive 100-year performance warranty and dedicated lifelong support. Bart handles all aspects of maintenance, updates, and service. We can visit clients personally or ship material samples for approval during the design phase.

**LIFETIME
WARRANTY**

Delivered with a comprehensive 100-year performance warranty and dedicated lifelong support. Node handles all aspects of maintenance, updates, and service. Premium Trade-In Program accepting aircraft, supercars, and luxury vehicles with competitive valuation and seamless transition.

register your interest at
nut.nrutseab.com

apex series

status
delivery 01 2027

Pinnacle of Autonomous Aviation



performance
Mach 0.95+
maximum velocity

noise
<60dB
interior

Bespoke

Every Apex Founding Edition is fully handcrafted and custom-built from energy systems to interior finishes. With similar processes, craftsmanship and control as the Node Made Bespoke.

Performance

Carbon-free electric and hybrid propulsion systems Jelly Core suspension with proprietary aerodynamic impact absorbers for the smoothest takeoff, landing, and turbulence-free flight

Wellness & Comfort

Spa-level wellness cabins featuring LED sunlight-mimicking wake-up systems, adjustable window tinting, bathtubs, showers, steam rooms, heated floors, and self-cleaning surfaces 24/7 AI Concierge for lighting, temperature, ambiance, automated food service, and predictive comfort adjustments Fully bespoke interiors configurable for luxury, medical, air ambulance, or specialized use – including accommodations for pets

Safety & Redundancy

Advanced emergency systems including life boats, whole-aircraft parachute support, automatic SOS triggers, and redundant hardware monitoring Full autopilot capability with human pilot override (ready for future fully autonomous operations)

**LIFETIME
WARRANTY**

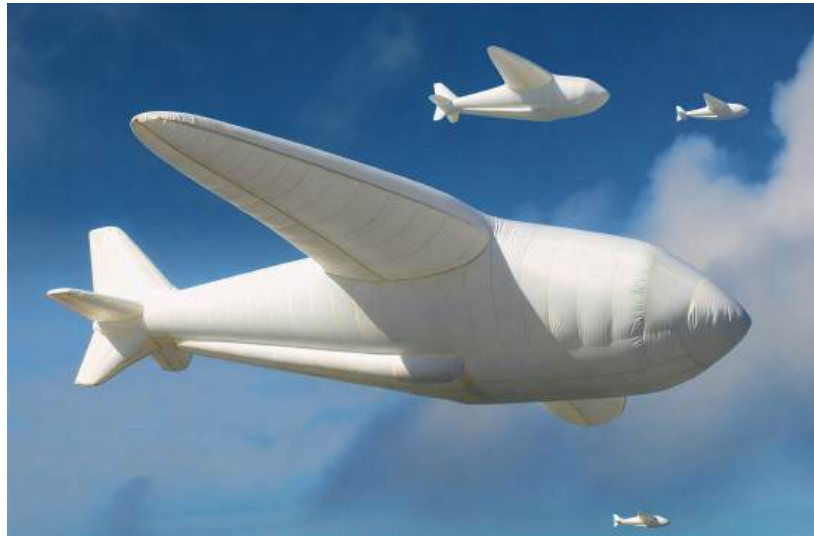
Lifetime software updates and 25-year performance guarantee on all systems. Premium Trade-In Program accepting aircraft, supercars, and luxury vehicles with competitive valuation and seamless transition. Worry-free ownership with no-questions-asked service and logistics support

register your interest at
nut.nrutseab.com

commerical

status
delivery **01 2027**

Hybrid Buoyant Logistics Systems



powered by

**solar+ battery +
buoyant gases**

speed

30-90 kmh

payload

5-200kg

This system is currently in development and has not yet received aviation or regulatory certification. Flight operations, routes, and commercial deployment are subject to approvals by relevant authorities and will be conducted under certified operators or contractual arrangements where required. Performance specifications, including speed and payload, are target estimates and may vary. Pre-orders and pre-commitments are accepted for planning and allocation purposes only and do not constitute immediate availability or authorization for operation.

Use, deployment, and operation will comply with local aviation regulations and may require third-party certification, licensing, or operator agreements depending on jurisdiction.

register your interest at
nut.nrutseab.com

supersonic

status
projected deployment 2028-2029

Next-Generation Supersonic Aircraft



~710mph

Mach 0.95

flight time

12 hours

loudness

<65 PLdB

+ jelly layer & boom shaping



~805mph

Mach 1.05

flight time

9-10 hours

loudness

68 - 72 PLdB

+ jelly layer & boom shaping
altitude profiling & quiet supersonic cruise



~1520mph

Mach 2.0

flight time

6-8 hours

loudness

95+ PLdB

+ jelly layer & boom shaping
altitude profiling & oceanic/restricted routes

Specifications, timelines, and capabilities are subject to change as development progresses. This program is currently in research and development and has not yet entered commercial production. Deployment timelines are dependent on successful testing, certification, and regulatory approvals. Pre-commitments are non-binding and intended for early partnership and planning purposes.

register your interest at
nut.nrutseab.com


cooked

status
delivery 01 2027

Fresh Ingredients, Real Footage, Zero Secrets

Every Cooked product – cookie or skincare – is made from scratch with ingredients you can name. Not "natural-inspired." Not "dermatologist-tested." Actual food-grade, skin-safe ingredients, made fresh, in small runs.

Scan it. See everything.



Every Cooked product ships with a QR code linked to its own production episode – who made it, where the ingredients came from, footage of the exact batch. Not a brand story. A real record.

SKINCARE & MAKEUP

483 SKUs across 11 ranges – toners, serums, foundations (35 shades each), lip balms, body care. Every range shares a hero ingredient from the food line. Same philosophy, same traceability.

TONERS

SERUMS

FOUNDATION

35 SHADES

SPF 50+

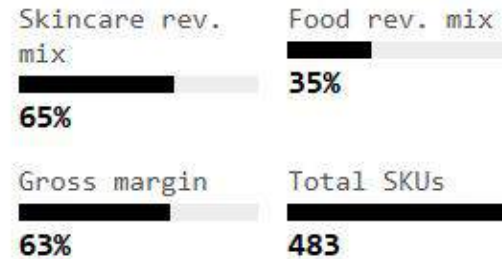
LIP CARE

OPEN COLLABS

Cooked is open infrastructure. Chefs, cosmetic chemists, artists, ingredient farms – anyone who believes in showing their work can create a Cooked episode.

Every collaboration is a new QR episode. A new product. A new story you can actually verify.

BY THE NUMBERS



THE X COOKIES — YOUR ENTRY POINT

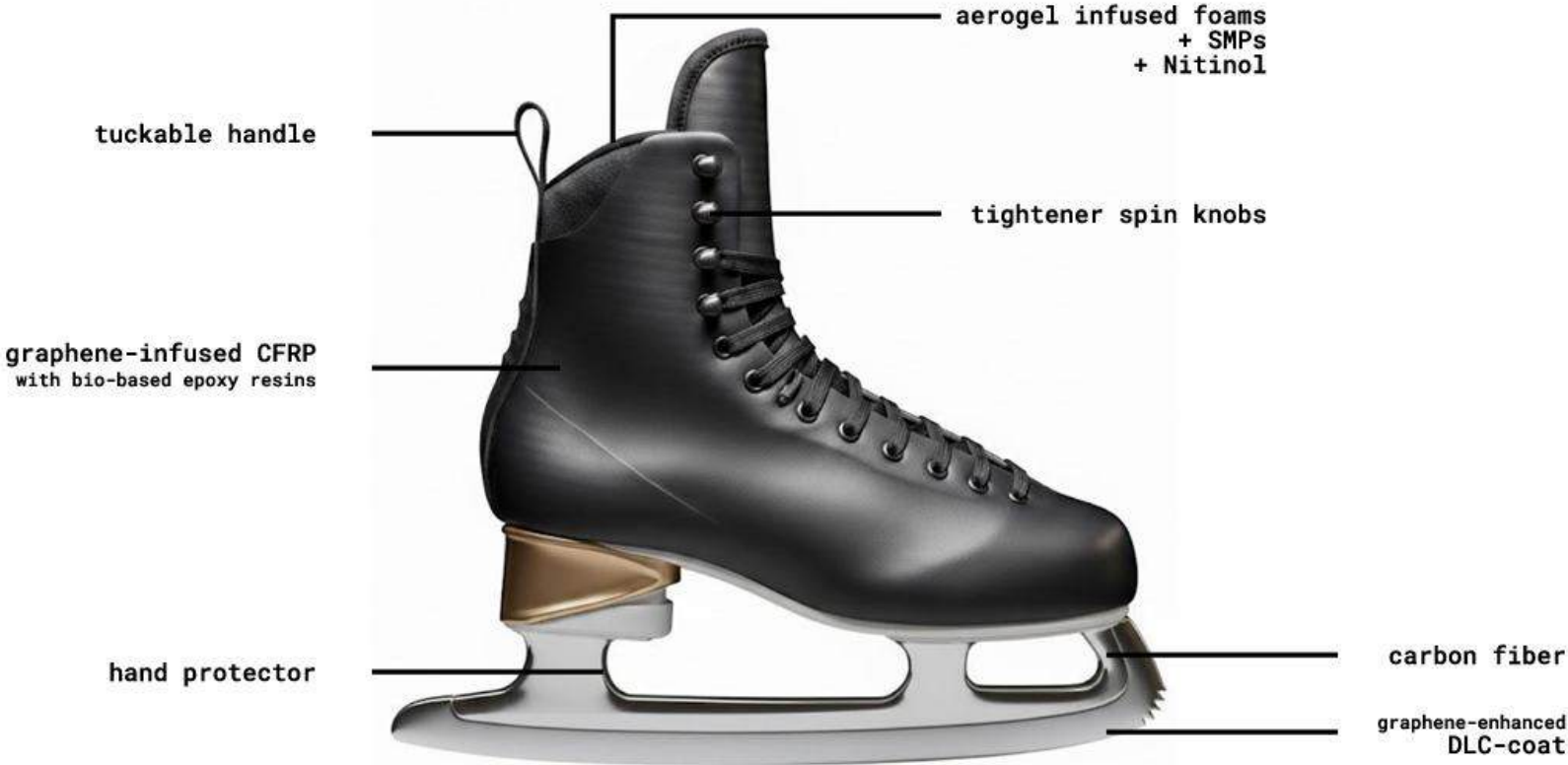
The Black Dark choc + peanut butter. 200g. Dense, bittersweet, real.	The White Lime + asam boi + almond. Bright, sour, unexpected.	The Tomato Tomato + kelp + mozzarella. Savoury, umami, curious.	The Earth Pistachio + walnut + oat. Grounded, nutty, honest.	Birthday Confetti + cream cheese + granola. Joyful, unapologetic.
--	---	---	--	---

register your interest at nut.nrutseab.com

hilde skates

status
delivery 01 2027

Ice Skates Built For Performance



**LIFETIME
WARRANTY**
10-year performance
warranty

always
<290g

register your interest at
nut.nrutseab.com

nuff

status
 delivery 01 2027

The Sensory Fruit Store - EDC × Produce

WHAT'S IN EVERY DROP

Peak-season fruit, curated by hand.
 One matching tactile object, limited edition.
 Seasonal mascot + narrative booklet.
 Collectible packaging that becomes an object.
 QR link to the farm and maker.
 Optional: scent pairing + hand lotion.

WHO NUFF IS FOR

People who gift carefully. People who collect slowly. People who believe the way something feels matters as much as what it is.

If you've ever kept packaging because it was too beautiful to throw away – NUFF was made for you.

HOW IT FEELS

Every NUFF tactile object is assigned a feel profile – a specific physical sensation designed to satisfy a specific emotional need.

SOFT Melt	PRESS Burst	PULL Elastic	HOLD Weight	RUB Silk
--------------	----------------	-----------------	----------------	-------------

Spring Drop Strawberry · Lychee White peach · Fig Feel: Soft + Melt	Summer Drop Mango · Watermelon Durian · Longan Feel: Burst + Elastic
Autumn Drop Pear · Persimmon Pomelo · Grape Feel: Weight + Press	Winter Drop Mandarin · Yuzu Sugar apple · Kiwi Feel: Silk + Hold

SOURCING REGIONS



01 Seasonal Fruit Drops Farm-direct, peak-season produce sourced from China, SEA, and beyond. Curated for freshness, not volume. Rescued harvests. No waste. Delivered in a 5-day optimal window.	02 Tactile Collectibles Handcrafted soft objects in bio-based materials – designed to be touched, kept, and returned to. Each piece has a distinct feel profile. Limited seasonal editions. These are not toys.	03 Story Worlds Every season is a living universe – mascots, narrative themes, and packaging designed as collectible architecture. Scan the QR. See the farm. Meet the maker.
---	---	---

LIFETIME WARRANTY
 10-year performance warranty (edcs only)



register your interest at
nut.nrutseab.com

bmt by hilde

status
delivery 01 2027

Ice Skates Built For Performance

TIER 01

BUTTERMILK TOWN RELEASES

- Controlled releases tied to Nrutseab Town environments
- Positioned within spatial and cultural programming
- Not available through standalone retail channels
- Pre-announced access for Town residents and partners

TIER 02

BESPOKE & HAUTE COUTURE

- Each garment developed from first principles
- Custom material created per piece
- Sensory design: texture, weight, movement, wear
- Exclusive usage rights available for select pieces

ANNOUNCED PIECES

HUG JACKET

Developed for weight, warmth, and wear comfort - designed to be experienced on the body, not assessed on a hanger.

BREAD SHOES

Material-led footwear developed from the ground up - texture, sole structure, and form developed as a unified sensory object.

WARRANTY Lifetime 100 years <small>(extendable)</small> . No conditions on normal wear.	IDENTIFICATION Embedded Cert ID Each piece trackable and authenticated throughout its life.	MAINTENANCE Indefinite Services Repair, refurbishment, alteration - as long as the piece exists.	CARE Optional Integration Washing and ongoing care integrated into your Nrutseab environment.
DESIGN METHOD First Principles + Custom Material	WARRANTY Lifetime - All Pieces	RELEASE MODEL Controlled / Town-Tied	POSITIONING Asset, Not Seasonal Product

shows to be announced
events.nrutseab.com

inquire or comission
hello@nrutseab.com

LIFETIME WARRANTY

convconv

status
fully live 01 2027


Optionality, Gatherings and Convenience

CORE MODEL

<p>01</p> <p>Maximum optionality</p> <p>300+ SKUs across snacks, formats, and flavour profiles. Modular combinations tailored to individual preference. Continuous SKU rotation and expansion driven by demand, feedback, and regional signals – the selection never stagnates.</p>	<p>02</p> <p>Gatherings</p> <p>A subscription system built around relationships – friends, partners, teams. Shared boxes that prompt intentional time together through food. Configurable by group size, preference, and frequency. Recurring delivery structures designed to make gathering a default, not an effort.</p>	<p>03</p> <p>Infrastructure-led delivery</p> <p>Powered by Aroud – Nrutseab's proprietary logistics layer built for high-speed cross-region delivery. Integrated supply, fulfilment, and last-mile coordination designed to reduce latency between production and consumption to its functional minimum.</p>
--	---	---

TWO PLATFORMS - ONE SYSTEM

<p>convconv — online PRIMARY INTERFACE</p> <ul style="list-style-type: none"> - Primary ordering, customisation, and subscription management layer - User-level personalisation and preference tracking across SKUs and formats - Gatherings subscription configured and managed here – group size, cadence, preferences - Global access tied directly to Aroud delivery infrastructure - Continuous SKU discovery – seasonal, regional, and experimental drops surfaced at user level <p>The online platform is the primary scale layer. Every offline interaction traces back to a profile built here.</p>	<p>sconv — offline SUPER MIDNIGHT CANTEN</p> <ul style="list-style-type: none"> - Fully automated physical convenience format – no staff, no fixed menu - Rotating, regionally responsive offerings updated continuously - Designed for high-frequency, low-friction access – the 2am visit is the use case - No capital expenditure for location partners – zero-cost deployment model - Dual revenue stream for property owners: retail margin plus Remarksh-powered advertising income <p>sconv activates prime commercial real estate as a fully automated, revenue-generating convenience node. Location partners earn passively.</p>
--	--


 powered by **Aroud**
 +
 300 SKUs
 +
 COOKED

coming soon at
conv.nrutseab.com

the batch

status
beta 01 2027

Optionality, Gatherings and Convenience

CAKE

Handcrafted, batch-produced daily. Natural ingredients, rotating weekly menu - global flavour profiles with consistent execution.

Weekly rotation · Natural ingredients · Daily production

SOY

Soy-based products developed to Nrutseab's quality standard. Controlled sourcing and production consistency across every order.

Controlled sourcing · Consistent spec · Daily batch

COFFEE

Provisioned alongside cake and soy through integrated daily logistics - same delivery, same quality window, no separate arrangement needed.

Integrated delivery · Single-source logistics

AVAILABLE TO

- Residential subscribers - daily or scheduled personal delivery
- Offices and workspaces - team subscription or bulk contract
- Corporate partners - volume supply under formal agreement
- Hospitality environments - integrated provisioning as house service
- Nrutseab Town residents - included as standard environment service

WHAT MAKES IT DIFFERENT

- Not a delivery aggregator - a controlled production-to-door system
- Freshness window tracked and maintained per product per day
- Menu rotation keeps engagement without compromising production standards
- Subscription model creates predictable daily revenue and demand signal
- Integrates into Nrutseab environments as a live operational service

PRODUCTION MODEL
Daily Batch / Controlled

COMMERCIAL MODEL
Subscription + Corporate Contract

MENU CADENCE
Weekly Rotation

LOGISTICS
Integrated / Single-Source



powered by
Aroud



coming soon at
the.nrutseab.com

buttermilk town

status
delivery 01 2027

The 2026 Production Season

experimental formats featured

immersive versions

360°

episodes

single take

automated filming

drone cams

reads storyboards and
films autonomously

Four Generations:

a Malaysian Chinese story

A four-generation Malaysian Chinese family's story, told through lived memory, tracing survival, loss, and identity from migration to modern Malaysia.

Buttermilk Town

A young amnesiac, caught between the human world and a fallen mythical race, unknowingly creates a town that breaks the rules of time and space.

Hawthorne

A young girl who never needed to enter danger chooses to step into the fire—and then beyond the rules meant to contain it.

Full Room

An investor who can reset a single day uses time itself to build an untouchable scale of wealth.

Weekend Retreat

A carefully curated weekend experience invites friends into a different rhythm of living.

Nrutseab Operations

Turning the act of building a system into the content itself.

All content briefs are tentative and subject to final changes. While each production listed is confirmed for development, details including format, runtime, and presentation are subject to revision.

register your interest at
nut.nrutseab.com

seab

status
batch 1 delivery 02 2027

The \$1 Ambient Projector

interactive content



ambiance creator

- Form Factor** 10cm x 10cm x 10cm
- Design Features** Beige acoustic fabric speaker grille on top, round centered camera aperture (privacy-focused), fully opaque housing concealing internal rotating projection mechanism
- Projection** 300 ANSI lumens, native 720p resolution, autofocus, digital lens shift, 360° interior rotation capability for omnidirectional ambient projection
- Audio** Speakers come with 3D soundscape and active room acoustics measurement to provide a immersive, room-filling experience
- Remarsh Camera** Interactive content feature and automatic experience optimization features included with on-device edge processing only; physical privacy indicator and default-off setting available
- Connectivity** Wi-Fi 6, Bluetooth 5.0, HDMI-in, USB-C (power + data), 3.5 mm audio, NFC for movie card interaction
- Power & Runtime** Powered by The Block
4-9 hours of gaming/4k video
- Cooling** Silent fan design with space-grade thermal management
- Additional Features** Auto-focus, ambient modes, NFC content unlocking, Constantly operates <30db, Gesture & Audio Interaction, Nrutseab Exclusive Content, Wifiless Streaming, 5GB Download, Portable, Colour Correction

LIFETIME WARRANTY

As long as the SEAB program runs, hardware and system replacements and upgrades are covered under Nrutseab's lifetime warranty.

get it at
prod.nrutseab.com/seab

seab

status
batch 1 delivery 02 2027

The Model Behind The \$1 Projector



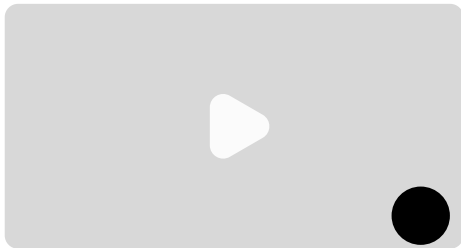
nfc card

own your favourite movie/album for good. nfc readable on any nfc compatible device. ad free with additional interactive elements on the seab projector.

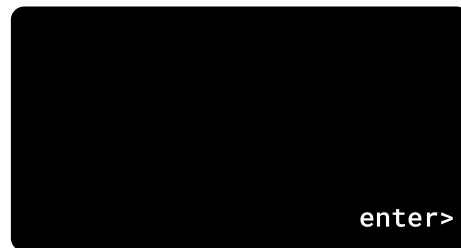
explore content partnership

advertisements

indicated in black



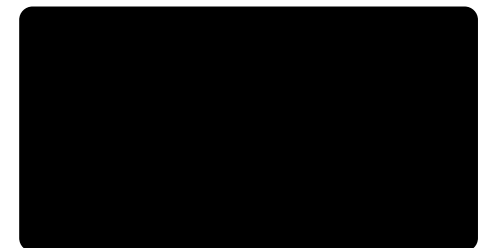
normal view:
ad placement located in the bottom right corner of screen. loops for 15-30s per ad, 5s in between ads. 1 hour ad free allocation provided.



on start up:
full screen ad, only skippable after 5seconds



main page:
banner ads and interactable brand events



ambience & experience packs:
brands and IP themed ambience lighting, loops and playlists with interactable brand events

LIFETIME WARRANTY

nfc cards are eligible foro loss replacements (limited to 1-2/year)

see advertising solutions

stories

status
delivery 01 2027

End-to-End Production Support & Creative Tech Platform

exploring all the different ways to tell

stories

Nrutseab Stories integrates advanced production services with a connected talent and creative ecosystem. Supporting studios, actors, and content creators, we streamline operations, enhance output quality, and provide AI-powered insights across Hengdian and global locations.

FOR CREATORS & TALENT

MAKE ON YOUR TERMS

- Access a curated pool of scripts and thematic briefs
- Structured filtering to match your creative profile
- Funding and production support built into the system
- Nrutseab locations, environments, and talent network available
- IP structured for long-term value - not just one-time release

FOR INVESTORS & PARTNERS

CONTROLLED IP CREATION

- Selective slate - quality over volume
- Narrative control retained throughout production
- Integrated distribution reduces external dependency
- Cultural IP compounds across Nrutseab's environment and fashion systems
- Long-term positioning - content and characters as durable assets

ECOSYSTEM ASSETS AVAILABLE TO PRODUCTIONS

- NRUTSEAB LOCATIONS
- TALENT NETWORK
- MATERIAL & SET DESIGN
- DISTRIBUTION CHANNELS
- HILDE WARDROBE
- BRAND ENVIRONMENT

MODEL

Fund, Develop, Produce

SELECTION

Creator-Driven Matching

IP APPROACH

Controlled / Long-term

SLATE POLICY

Selective - Quality Over Volume

<p>01</p> <p>SCRIPT POOL</p> <p>Curated scripts and briefs available to matched creators and talent</p>	<p>02</p> <p>MATCHING SYSTEM</p> <p>Structured filter aligns creators with appropriate material and themes</p>	<p>03</p> <p>FUND & PRODUCE</p> <p>Production support and funding deployed through Nrutseab Story infrastructure</p>	<p>04</p> <p>DISTRIBUTE & HOLD IP</p> <p>Integrated distribution channels with long-term IP ownership structured from the start</p>
--	---	---	--

register your interest at stories.nrutseab.com

haute music

status
delivery 01 2027

Original Soundtrack · Music Production · Licensing · A&R

THE ARCHIVE

300+

Original compositions available for licensing and sampling. Spanning orchestral, electronic, hybrid, and experimental forms – each authored by Hilde and available for sync clearance, sample commission, or full licensing. Productions and brands may access the archive directly or work with Haute to develop derivatives under full creative direction.

01 Brief
Project context, emotional direction, format, and timeline. Temp tracks reviewed without prejudice.

02 Concept
A musical language is proposed – thematic, tonal, structural. Presented before any production begins.

03 Production
Composition, arrangement, and sound design. Delivered iteratively alongside picture or to schedule.

04 Recording
Live sessions where the brief demands. Orchestral, chamber, electronic hybrid, and solo configurations.

05 Delivery
Stems, M&E, sync-ready formats, and master. Licensing documentation prepared and cleared.

WHAT HAUTE OFFERS

I Original soundtrack & score
Composition, production, recording, and delivery for film, series, short-form, and visual media. Full-service from brief through final mix – or individual phases where required. Stem delivery, M&E formats, and soundtrack master included.

II Sampling & licensing
Access to a 300+ original composition bank for sync, sampling, and licensing. Cleared for commercial use. Directors, brands, and artists may commission samples or license existing works outright – with full creative direction on how pieces are adapted.

III Full creative direction
Sound identity, campaign music, and sonic branding developed from concept. For brands, artists, and productions that need music – not a deliverable. Consistent language across every touchpoint.

WHO COMMISSIONS HAUTE

FILM, SERIES & VISUAL MEDIA

- Feature and short film directors seeking score with authorial intent
- Series and episodic productions requiring a consistent sonic identity
- Music video and short-form directors with a specific visual-sonic vision
- Branded content and campaign productions requiring original score

ARTISTS, LABELS & BRANDS

- Artists building or rebuilding a sonic identity from the ground up
- Labels seeking A&R direction for developing talent or existing catalogue
- Brands requiring original music and sound identity across campaigns
- Rights-holders looking to expand or re-licence their composition archive

A&R – DEVELOPING WHAT ALREADY EXISTS

Song bank development & artist direction

OPEN FOR PARTNERSHIP

Haute extends beyond commission into the development of existing catalogues and emerging talent. Labels, artists, and rights-holders may engage Haute to develop, reframe, or expand their song bank under Hilde's creative direction – new arrangements, sampling frameworks, sync-ready derivatives, and artistic recontextualisation. For artists seeking A&R direction, Haute offers the same auteur approach applied to original commissions: an honest, rigorous creative partnership built around what the work could become.

Remote commissions are available across all services – brief, concept, production, direction, and delivery managed without requiring physical presence. Haute works to the project's geography, not its own.

REMOTE & IN-PERSON · WORLDWIDE

All Haute commissions receive exclusive access to Nrutseab studio locations, infrastructure, and technology – available to no external partner outside of Haute. This includes production facilities, proprietary AI tools, mobility, and Nrutseab's global event and venue network.

register your interest at
stories.nrutseab.com

haute room

status
delivery 01 2027

Styling & Creative Direction

FOR BRANDS • FOR TALENT

For brands

CONTROLLED VISIBILITY

- Placement contract issued before production begins - certainty before spend
- Category exclusivity per production - one brand per category, no competition on set
- Verified metrics via Remarsh: impressions, dwell time, attention data on delivery
- Full creative documentation - stills, video, BTS - for brand's own channels
- Co-branded assets on Tier I placements, ready for campaign use
- Pilot on a single production. Expand on results - no long-term lock-in to start

Unlike influencer, PR, or editorial routes, placement here is not conditional on third-party decisions. It is contracted infrastructure - repeated, documented, and measurable across every cycle.

Pilot open now via the 77 rollout • hello@nrutseab.com

For talent

SIGNATURE, NOT STYLING

Haute does not produce looks for occasions. It builds the visual identity you carry forward - the version of you that becomes the reference. Hilde works from nothing, without preconception, until the image is right.

Commissions give talent exclusive access to Nrutseab's locations, production infrastructure, and technology - environments and tools that exist nowhere else and are unavailable to any external party outside of this collaboration.

The work lives inside film, music, and cultural moments that Nrutseab owns and distributes globally. Not on a brand's feed. Not subject to an editor's decision. In the frame, in the archive, for as long as the work exists.

Remote direction is available in full. Haute comes to you, or builds the world remotely, without compromise to the outcome.

Private enquiries • hello@nrutseab.com • By introduction welcome

THE CREATIVE OFFER

<p>I Bespoke concept & creation</p> <p>Original looks built from a blank page. Concept, sourcing, construction direction, and final realisation originated entirely by Hilde. Nothing borrowed from existing visual language.</p>	<p>II Archival & rental direction</p> <p>Curated archival and rental sources styled with the same intentionality as bespoke. The resource changes. The authorship does not.</p>	<p>III Remake & reinterpretation</p> <p>Existing pieces reconstructed, altered, or re-contextualised into something entirely new. A signature built from the familiar. Collaborative with labels and wardrobes where relevant.</p>
--	--	---

PILOT ENTRY - 77 ROLLOUT - OPEN NOW

<p>#1 Preview</p> <p>Private preview of the 77 campaign direction and styling context</p>	<p>#2 Confirm</p> <p>Select tier and pieces. Placement contract issued before production begins</p>	<p>#3 Deliver</p> <p>Guaranteed placement executed. Metrics, documentation, and co-branded assets on delivery</p>	<p>#4 Expand</p> <p>Integrate across the full Haute pipeline on the strength of pilot results</p>
--	--	--	--

THE HAUTE GUARANTEE

Confirmed pieces are contractually guaranteed placement within agreed productions, talent appearances, and distribution cycles — before a single frame is shot.

Placement is not conditional. It is contracted. Distribution is not dependent on algorithms, editorial decisions, or third-party approval - it is executed within Nrutseab's owned pipeline across film, music, live events, and short-form content in 10 cities globally.

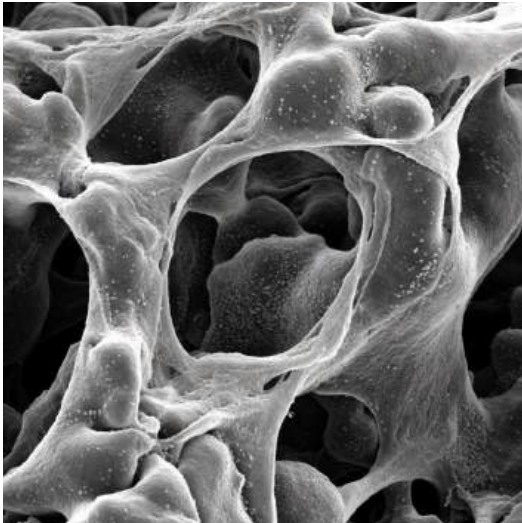
All Haute commissions receive exclusive access to Nrutseab studio locations, infrastructure, and technology - available to no external partner outside of Haute. This includes production facilities, proprietary AI tools, mobility, and Nrutseab's global event and venue network.

register your interest at
stories.nrutseab.com

resorb

status
delivery 06 2027

Reusable, Self-Healing Material with Energy Dissipation



energy absorption
≥95%

healing efficiency
≥95%
at 18-25°C

cycle life
>150
verified

Weight Reduction

Lightweight composite architecture delivering 40–60% lower weight compared to conventional protective materials.

Additional Properties

UV and chemical resistant, with reliable mechanical stability and autonomous healing properties.

Operating Range

–40°C to +120°C, with intrinsic room-temperature healing and rate-dependent viscoelastic response for reliable performance in extreme environments.

that means

150 cycles later
conventional rubber

+ 2-5%
peak transmitted force
+45-70%

-1-3%
energy dissipation
-25-40%

+1-4%
stiffness
+35-55%

97-99%
performance retention
60-75%

pre order at
node.nrutseab.com/resorb

jelly

status
delivery 11 2027

Reactive Transparent Impact-Softening Body Shell

density
1.45–1.65
g/cm³

transparency
≥92%
visible light
tunable opacity 10–85%

impact energy absorption
45–60 J/cm²
before penetration
progressive failure with
>80% strength post-impact

thermal stability
–40 to 120°C
>60–70°C under normal
ambient conditions

surface hardness
85–95
shore D + self-healing layer

solar augmentation
1.5–3.5 kWh
per day
auxiliary range extension



flexural modulus
3.5–5.0
GPa

tensile strength
120–180
MPa

energy absorption efficiency
+68%
over baseline lattice structures

fatigue resistance
>10⁷
cycles at 50% load

In Practice

This hybrid combines a clear aerospace polymer matrix with nano-dispersed titanium particles. It maintains high optical clarity while delivering structural strength. On impact, embedded phase-change microdomains trigger viscoelastic softening to absorb energy progressively. Integrated micro-LEDs and chromophores enable touch/gesture-reactive glow and tunable opacity. Thin-film solar elements embedded in the structure generate auxiliary power.

Potential Applications

Replaces heavy, opaque metal and glass with a single lightweight, see-through, self-protecting material. This creates a completely new driving experience: total visibility of the powertrain in motion, built-in safety that softens on impact, and elegant design with almost no seams. It makes cars lighter, safer, more beautiful, and able to generate their own electricity from sunlight.

Response

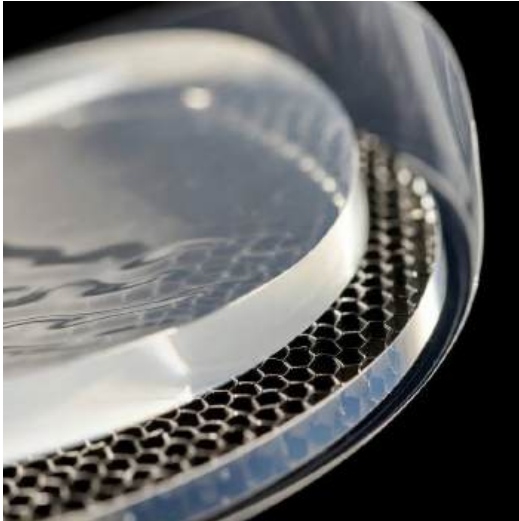
Touch/gesture illumination <100 ms; opacity shift via electro/photo-reactive mechanisms

learn more at
node.nrutseab.com/research

jelly core

status
delivery 12 2027

Ultra-Smooth Motion-Minimizing Viscoelastic Core



vibration isolation

-85-95%
(<80 Hz)

body roll control

$<2.5^\circ$
 $<1.0g$ lateral acceleration

pitch control

$<1.5^\circ$
 $<0.8g$ longitudinal inputs

In Practice

Jelly Core uses a proprietary non-Newtonian viscoelastic gel matrix encapsulated in polymer-titanium cells. Electrorheological or magnetorheological activation allows near-instant viscosity changes. Distributed throughout a structure, it works to damp vibrations and control motion. Response time is under 50 ms for viscosity modulation, aligning with advanced MR damper benchmarks of 7–23 ms in optimized systems. The damping range varies seamlessly from near-zero in glide mode for effortless smoothness to high-stiffness during dynamic maneuvers. Peak transmitted vibration is reduced to 0–2% in optimized conditions, while the system supports overall quietness of less than 40 dBA when combined with complementary noise suppression technologies. It couples with regenerative systems for improved energy efficiency, delivers a service life exceeding 500,000 km with minimal degradation, and automatically compensates for changes in load.

Potential Applications

Jelly Core replaces conventional mechanical stabilization elements with a lightweight, intelligent, near-silent viscoelastic solution. It delivers an unprecedented level of motion control and comfort while reducing weight and complexity across applications in transportation, precision machinery, and vibration-sensitive systems.

learn more at
node.nrutseab.com/research

quiet

status
delivery 12 2027
Hybrid Silent Energy-Transfer Platform

Reusable, Non-Mechanical Actuation with Complete Audible Noise Elimination

noise suppression **≥98%** cycle life **>500**
 at 1m distance verified

How it actually works in practice

The operator selects or lets the AI auto-choose the optimal mode based on material type. Ultrasonic mode provides precise micro-vibration cutting; microwave mode softens the material first for dust-free, vibration-free penetration. No loud motor whine, no grinding, no hammering - only quiet or imperceptible energy transfer at the tip.

Deployment

- Medical variants: Handheld pistol-grip design (0.8-1.2 kg). Sterile single-use tips attach via quick-change collet. Integrate with standard operating-room irrigation and suction. Power via rechargeable battery or corded supply. Simple on/off with foot-pedal option; AI handles mode switching and safety monitoring. Training requires 2-4 hours for surgeons and staff. Fully autoclavable components where needed.
- Construction variants: Rugged handheld or rig-mounted format (6-12 kg). Compatible with standard SDS-Max or custom probes. Battery or corded power. Dust-extraction port included. Deploy like a conventional drill but without ear protection or noise complaints. Material sensor auto-calibrates power for concrete, brick, or rebar-free zones.

Noise Elimination

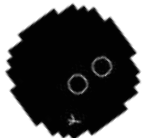
Hybrid ultrasonic piezoelectric (24-36 kHz) and localized microwave/RF (2.45 GHz) energy delivery, combined with acoustic metamaterial enclosure and AI-driven active vibro-acoustic cancellation, achieving effectively <20 dB(A) audible noise at 1 m (below perceptual threshold in typical environments and well under regulatory limits). This represents a reduction of 60-110 dB compared to conventional medical drills (typically 78-97 dB(A)) and construction tools (85-120+ dB(A) for rotary hammers and jackhammers).

Additional Properties

Lightweight composite-metamaterial housing with integrated EMF shielding (SAR compliant), thermal management (<60°C surface), material auto-detection, and quick-change sterile/rugged interfaces. Dust generation reduced by up to 70% in microwave mode; vibration transmission to operator <0.5 m/s². Autonomous AI optimizes actuation mode for precision, safety, and efficiency across bone, concrete, brick, and ceramics. IP54-compliant; compatible with existing irrigation and dust extraction systems.

that means

~500 hours later
+ 0-2%
peak transmitted vibration
-95-100%
audible noise
(-60-110 dB)
+5-15%
precision
95-98%
performance retention



Context On The Numbers

Conventional drills & tools: 78-97 dB(A) medical drilling, 85-120+ dB(A) construction rotary/impact tools, +5-15 m/s² vibration, 60-80% precision retention (due to wear and torque reaction)

coming soon at
node.nrutseab.com

the block

status
delivery 01 2027

Next-Generation Solid-State Battery



~~450~~ Wh/kg
10,000

mAh
5,000
scalable

charge cycles
2,500+
verified

Safety

Near-zero thermal runaway risk through solid-state electrolyte, "self-healing" adaptive electrodes, and honeycomb-inspired separators. Survives puncture, crush, and drop tests without ignition.

Form Factor

Bendable thin-profile design 10 cm x 1 cm x 0.5-2 mm, supporting >1,000 flex cycles at radii <5 mm.

Operating Range

-20°C to 80°C, with real-time AI-powered BMS. Adaptive C-rate. Optional integrated solar trickle charging.

that means per charge cycle

~22x runtime

conventionally

smartphones

7-11 days

8-12 hours

electric cars

4,000-8,000 km range

400-600 km range

drones

7-15 hours

20-40 mins

computers

3-10 days

~8-15 hours

amr robots

7-11 days

8-12 hours



Context On The Numbers

Gasoline (including oxygen from air) is ~12,000 Wh/kg

pre order at
node.nrutseab.com/theblock

butter & bread

status
delivery **2028-2029**

Billions-Qubit Hybrid High-Performance Compute System

qubits (hybrid)

1B

superconducting transmon
(hybrid quantum-classical system)

memory

100TB

interconnect

130TB

optical/cryogenic



power

20-50W

per compute module
excluding centralized cryogenic overhead

cooling

<10mK

gate fidelity

99.9%

2 qubit
up to 1m/s coherence time

**LIFETIME
WARRANTY**

Own it once, stay current forever.

Modules and system upgrades are covered under Nrutseab's lifetime warranty, including hardware, integration, and execution performance.

pre order at
screener.nrutseab.com/butter

butter & bread

status
delivery 2028-2029

Billion-Qubit Hybrid High-Performance Compute System

Compute Core

Billion-scale superconducting transmon qubit array with hybrid quantum-classical orchestration. Enables massively parallel computation with dedicated per-user execution and real-time classical feedback.

Form Factor & Mobility

Compact 7.5×7.5 cm per module, stackable, with internal battery powered by The Block, enabling ~10-25 hours of portable operation without external power. Modules scale seamlessly from mobile units to full rack deployments.

Architecture

Modular multi-chip stack with integrated cooling and optical interconnects. Designed for continuous upgrades with no downtime through evolving rack integration.

Execution Layer

Dedicated compute allocation per user with workload isolation. Hybrid orchestration enables AI, cryptographic, and simulation workloads to run without contention.

Error Correction

Surface code architecture with continuous classical integration, stabilizing noisy physical qubits into reliable logical operations for sustained computation.

pre order at
screener.nrutseab.com/butter

screener

status
delivery 2028-2029

Next-Generation, Foldable, Immersive Device



Natural Interaction

Control effortlessly with touch, gaze tracking, gestures, or voice.

Smart Modes

Offers Follow Mode for hands-free viewing, Carry Mode for portability, and Vision Mode for augmented reality and scene understanding.

Transparency & Control

You can see exactly what data is stored, where it is stored, and set precise permissions for local-only or your own data center.

waterproofing

IP68

storage

1-3TB

32GB - 64GB RAM

battery life

7-11

days

powered by the block

display

6-8.5"

foldable OLED

transparent + immersive modes

connectivity

eSIM

multiple eSIM

Wi-Fi 7, 5G, Bluetooth 6.0

chip

butter

CPU + GPU + NPU + QPU

Adaptive Interface Powered by the Butter chip, Screener's adaptive UI intelligently learns your habits, preferences, and goals to deliver seamless, personalized workflows. For enterprise clients, it seamlessly integrates with existing corporate interface standards, preserving brand guidelines and operational protocols while adding intelligent enhancements.

**LIFETIME
WARRANTY**

Trade in your device for the next model for just \$200, staying up-to-date long-term without being forced to pay for software updates you didn't choose.

register your interest at
nut.nrutseab.com

butter chip

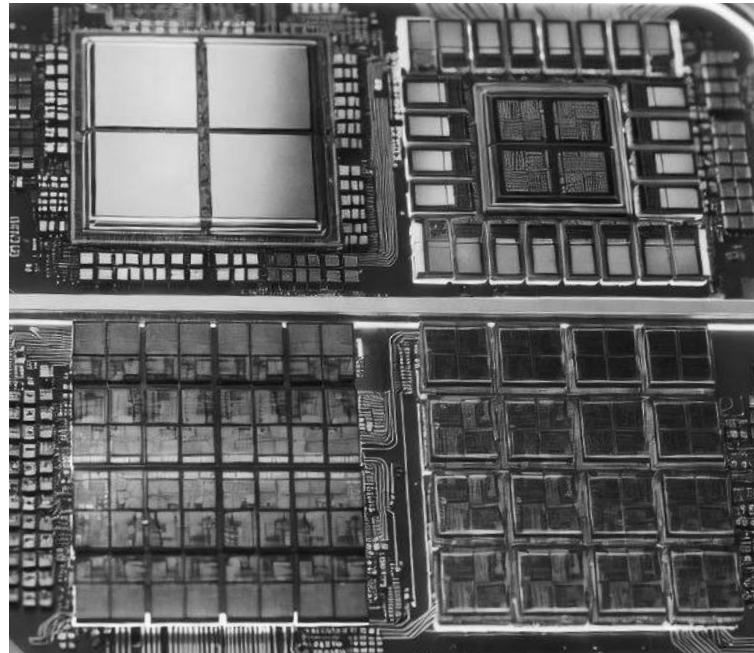
status
delivery **2028-2029**

One silicon. Four engines. Zero cloud.

architecture
**CPU + GPU +
NPU + QPU**

process node
2nm

ai performance
180 TOPS
+ QPU acceleration



power
1.2-1.8W
sustained ai + QPU

unified memory bandwidth
550 GB/s
up to 4.5 GHz

llm interference
70B models
@45-60 tokens/s

coming soon at
screener.nrutseab.com/release

seab-1

status
delivery **2028-2029**

Next-Generation, Foldable, Immersive Device

PHYSICAL LAYER

LEO SATELLITE NETWORK

Low Earth Orbit constellation providing distributed global connectivity across all Nrutseab environments - urban, remote, and in-transit.

DRONE-HYBRID EXTENSIONS FOR LAST-MILE AND VARIABLE TERRAIN

OPERATIONAL USE CASES

REAL-TIME LOGISTICS

MEDIA & DISTRIBUTION

CLOUD COST CONTROL

PARTNER CONNECTIVITY

ENVIRONMENT OPERATIONS

REMOTE LOCATIONS

COMPUTE LAYER

BUTTER COMPUTE

Localized processing embedded in orbit - reducing round-trip latency and dependency on ground infrastructure for real-time operations.

IN-ORBIT EDGE PROCESSING · LOW LATENCY OPERATIONS



OPTIMIZATION LAYER

CLOUD INTEGRATION

Integrated cloud framework managing cost, routing, and performance across the full stack - satellite, edge nodes, and ground systems in coordination.

COST OPTIMIZATION · LOAD MANAGEMENT · REAL-TIME ROUTING

ORBIT TYPE

LEO + Drone Hybrid

COMPUTE

In-Orbit Edge Processing

COVERAGE

Global / All Environments

PRIMARY OUTCOME

Lower Cost · Lower Latency

events

scener core

screeener core challenge 2026

networking & briefing
07 2026

call for papers
08 2026

acceptance & final showcase
12 2026

Double-Anonymized Peer Review

Screeener Core is a global, peer-reviewed compute engineering competition and conference, combining rigorous research evaluation with a live engineering showcase. The conference brings together top engineers, researchers, and industry innovators to solve real-world challenges in distributed systems, high-performance computing, edge-cloud integration, and hardware-software co-design.

THE LAB

A residence-sized, ultra-dense data center controlled entirely by Screeener. Maintained at cryogenic temperatures (-50°C or colder) for optimal performance, equipped with hybrid classical + quantum compute, stacked memory, and ultra-high-speed networking. Serves as the authoritative core for Screeener intelligence – private, secure, and optimized for minimal latency.

Extreme Compute Density CRYOGENIC
The world's most powerful compute in a compact footprint. Autonomous orchestration manages edge devices, sparse compute plants, and orbital nodes from a centralized, residence-scale facility.

Privacy-First Architecture PRIVATE
All data stays in-house, fully auditable, and compliant with GDPR and other applicable privacy regulations. Zero external dependencies for core intelligence operations.

Classical + Quantum HYBRID
Hybrid classical + quantum compute infrastructure with stacked memory architectures and ultra-high-speed networking for minimal latency across all operations.

Gamified Workspace LIVE
Live dashboards show compute activity, model convergence, and optimization metrics in real-time. Infrastructure becomes a visible, engaging spectacle.

THE SHOWCASE

ENGINEERS = STAR ATHLETES

Engineers participate as 'athletes' in live compute challenges. Each event allows participants to optimize algorithms, orchestration, and infrastructure in real time. Metrics are displayed on dashboards, including compute throughput, model convergence speed, power efficiency, and error recovery performance. Engineers compete for leaderboard positions and innovation points. Public dashboards and visuals are fully anonymized and compliant with privacy rules.

COMPUTE TFLOPS	CONVERGENCE ms	EFFICIENCY W/T	RECOVERY µs
--------------------------	--------------------------	--------------------------	-----------------------

THE SPORT: COMPUTE RACES

Screeener's ecosystem combines users' devices, compute plants, and the R&D lab in **timed, gamified challenges**. Challenge formats include frontier AI model tuning, federated learning rounds, and real-time inference and personalization tasks. Scoring is based on performance, efficiency, and innovation. Broadcasts stream to internal dashboards or optional public streams, with no disclosure of personal data.

FRONTIER TUNING AI model optimization challenges pushing the boundaries of convergence speed and accuracy.	FEDERATED ROUNDS Distributed learning competitions across edge devices with privacy-preserving aggregation.	INFERENCE SPRINT Real-time personalization tasks requiring minimal latency and maximum throughput.
--	---	--

Outcome: Engineers engage in a measurable, high-stakes environment. Infrastructure becomes a dynamic, story-driven spectacle, driving innovation and culture.

SCREEENER COMPUTE CHALLENGE

We are now opening pre-registration for the Screeener Compute Challenge. Engineers and research teams can express early interest in participation. Development costs are subsidized by Nrutseab via a dedicated subsidiary. Participants retain rights to their IP within the competition sandbox, with commercial licensing negotiated separately. All participation is subject to competition rules, privacy policies, and applicable regulatory compliance. Competition mechanics, timelines, and infrastructure are subject to change as the R&D facility is finalized.

BRAND

Partner as a brand in this curated competition. Select up to 2 athlete-researchers and contribute patented technology to the sandbox.

RESEARCHER

Apply to compete as an engineer or researcher. If selected by a brand, receive a guaranteed sponsorship of \$500,000/year to support your participation.

register your interest at
screeener.nrutseab.com/core

**SEAB
IFY**

thank you.
see you there